

NHK「シルクロード」主題曲  
**シルクロードのテーマ**  
 喜多郎・演奏

喜多郎 作曲  
 山下国俊 編曲

(♩=92)

フルート  
 (無くても演奏可能)

Musical staff for Flute, showing a melodic line in treble clef with a key signature of one flat and common time. The first measure starts with a piano (*p*) dynamic.

ソプラノ  
 リコーダー

Musical staff for Soprano Recorder, showing a melodic line in treble clef with a key signature of one flat and common time. The staff contains rests.

鍵盤  
 ハーモニカ

Musical staff for Keyboard Harmonica, showing a melodic line in treble clef with a key signature of one flat and common time. The staff contains rests.

ソプラノ  
 アコーディオン

Musical staff for Soprano Accordion, showing a melodic line in treble clef with a key signature of one flat and common time. The first measure starts with a piano (*p*) dynamic.

アルト  
 アコーディオン

Musical staff for Alto Accordion, showing a melodic line in treble clef with a key signature of one flat and common time. The first measure starts with a piano (*p*) dynamic.

テナー  
 アコーディオン  
 (オクターブ上に記譜)

Musical staff for Tenor Accordion, showing a melodic line in treble clef with a key signature of one flat and common time. The first measure starts with a piano (*p*) dynamic.

バス  
 アコーディオン

Musical staff for Bass Accordion, showing a melodic line in bass clef with a key signature of one flat and common time.

木

Musical staff for Woodwind instruments, showing a rhythmic pattern in treble clef with a key signature of one flat and common time.

Musical staff for Percussion instruments, showing a rhythmic pattern in bass clef with a key signature of one flat and common time. Dynamics include piano (*p*) and mezzo-piano (*mp*).

ピアノ

Musical staff for Piano, showing chordal accompaniment in grand staff with a key signature of one flat and common time. Chords are labeled: F, DmM7, Am, and Gm. The first measure starts with a piano (*p*) dynamic.

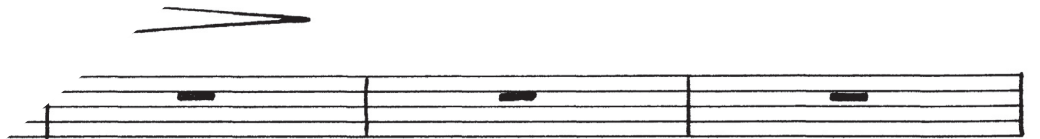
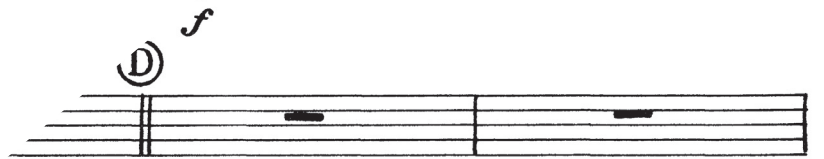
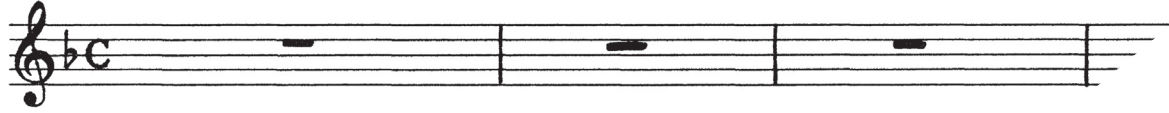
NHK TV「シルクロード」主題曲

# シルクロードのテーマ

鍵盤ハーモニカ

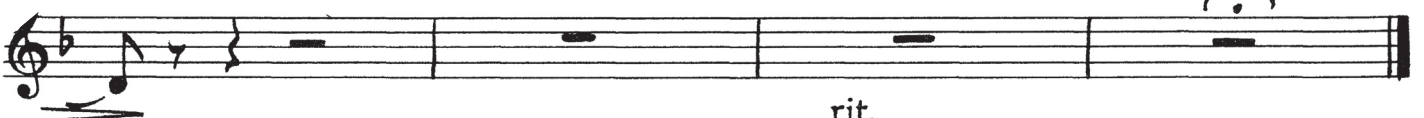
喜多郎 作  
山下国俊 編

(♩=92)



D.S.

Coda



rit.