

千の風になって

秋川雅史

新井満作曲
河野土洋編曲

Andante ♩=78

Musical score for '千の風になって' (Becoming a Thousand Winds). The score is in 4/4 time and features a melody primarily carried by the Flute and Violin parts. The tempo is marked 'Andante' with a quarter note equal to 78 beats per minute. The dynamic markings range from *mf* (mezzo-forte) to *mp* (mezzo-piano). The score includes parts for Flute 1,2; Oboe 1,2; B♭ Clarinet 1,2; Bassoon 1,2; F Horn 1,2; Trumpet 1,2; Trombone 1,2; Trombone 3 (optional); Timpani; Cymbal; Violin 1; Violin 2; Viola; V. Cello; and C. Bass. The Flute and Violin parts play a melodic line with a first ending bracketed. The Oboe and Violin 2 parts play a similar melodic line. The other instruments are mostly silent, indicated by rests.

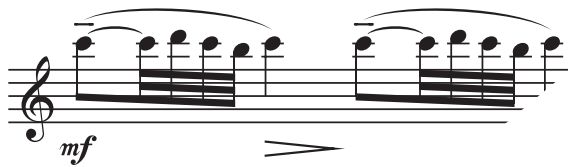
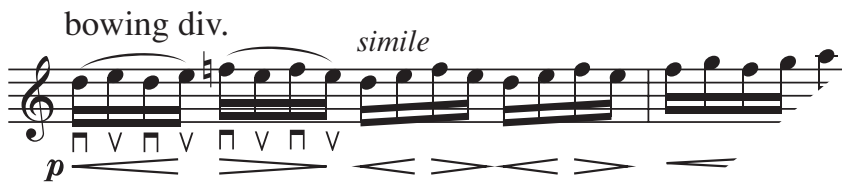
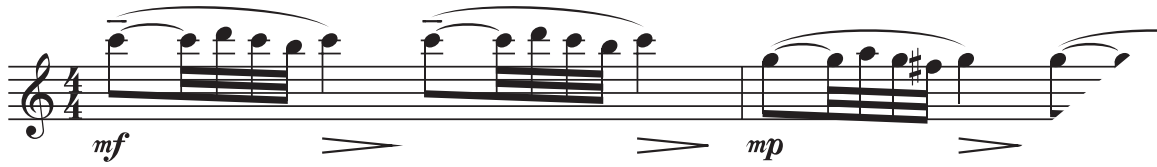
千の風になって

秋川雅史

新井満作曲
河野土洋編曲

Violin1

Andante ♩=78



Ⓐ

