

Chorale No. 1

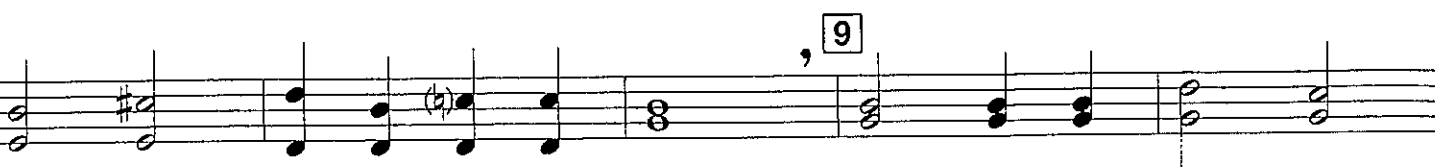
(Concert B \flat Major)

Frederick C. Atkinson, 1870

Arr. by James Swearingen

Legato

Bs.Cl.-bottom notes



Maintaining a strong awareness of subdivision is the key to eliminating phasing problems. Try to avoid the general tendency of wanting to rush, especially the moving eighth notes.

Chorale No. 2

(Concert G Minor)

Traditional Welsh melody

Arr. by James Swearingen

Adagio Bs.Cl.-bottom notes

