

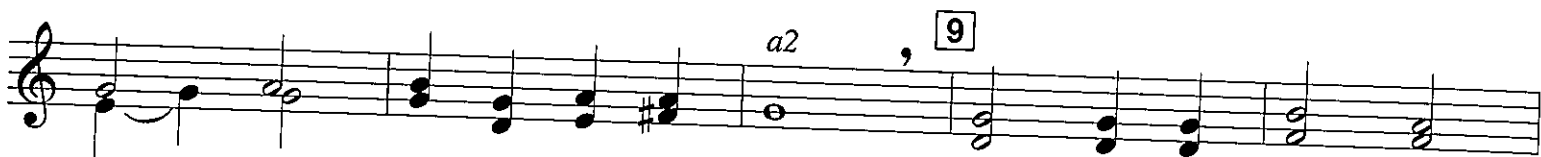
Chorale No. 1

(Concert B \flat Major)

Frederick C. Atkinson, 1870
Arr. by James Swearingen

In order to insure proper balance,
make sure the divisi parts are
divided evenly.

Legato



Maintaining a strong awareness of sub-
division is the key to eliminating
phasing problems. Try to avoid the
general tendency of wanting to rush,
especially the moving eighth notes.

Chorale No. 2

(Concert G Minor)

Traditional Welsh melody
Arr. by James Swearingen

Adagio

