

アニメ『君の名は。』主題歌

# 前前前世

RADWIMPS

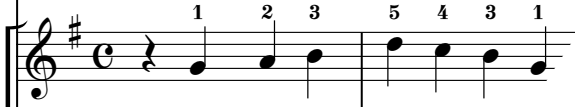
♩=160

G C

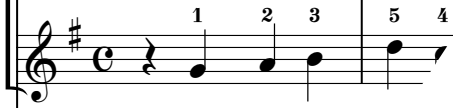
リコーダー



鍵盤  
ハーモニカ1



鍵盤  
ハーモニカ2



鉄琴



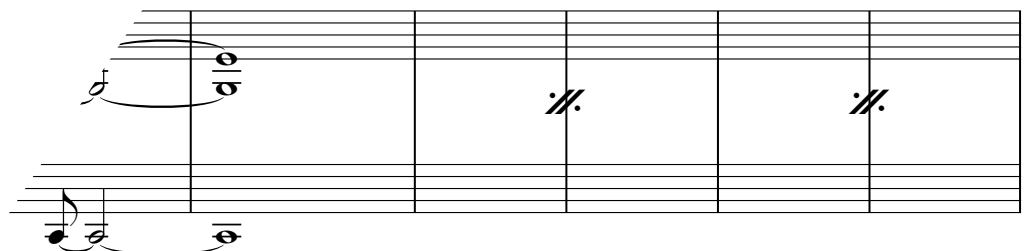
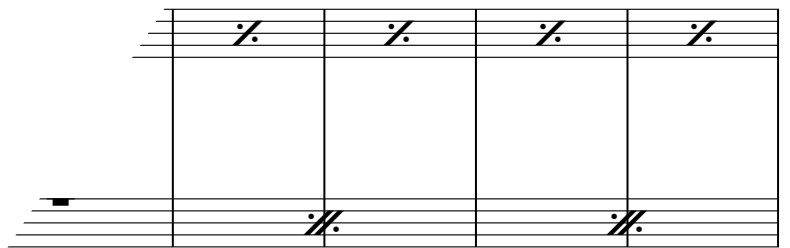
木琴



低音楽器



小太鼓  
大太鼓



G C Cadd9 (A) G

リコーダー

鍵盤ハーモニカ1  
 鍵盤ハーモニカ2

鉄琴  
 木琴

低音楽器

小太鼓  
 大太鼓



② G G C C D Em

リコーダー

鍵盤ハーモニカ1

鍵盤ハーモニカ2

鉄琴

木琴

低音楽器

小太鼓  
大太鼓

Tamb.  
S.Cym.

ピアノ

Detailed description of the musical score: The score is for page 4 of a piece. It begins with a key signature change to G major (one sharp) indicated by a circled 'B' and a sharp sign. The top staff is for Recorder, followed by two Keyboard Harmonica parts (1 and 2), Iron Piano, and Wooden Piano. The bass line consists of Bass Instruments, Small and Large Taiko, and Tambourine/Snare Drum. The Piano part is at the bottom. The music is in 4/4 time. The first measure has a whole rest for the Recorder and a dotted quarter note G for the other instruments. The second measure has a dotted quarter note G for the Recorder and a dotted quarter note G for the other instruments. The third measure has a whole rest for the Recorder and a triplet of eighth notes (G, A, B) for the other instruments. The fourth measure has a whole rest for the Recorder and a dotted quarter note C for the other instruments. The fifth measure has a dotted quarter note D for the Recorder and a dotted quarter note D for the other instruments. The sixth measure has a whole note Em chord for the Recorder and a whole note Em chord for the other instruments. The score includes various musical notations such as triplets, slurs, and rests.

Chord progression: G/D, Cadd9, Cadd9, D

リコーダー

鍵盤ハーモニカ1

鍵盤ハーモニカ2

鉄琴

木琴

低音楽器

小太鼓

大太鼓