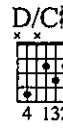
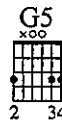
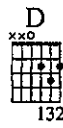
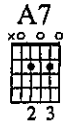
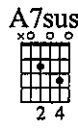
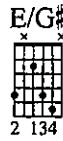
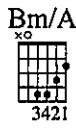
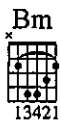


SCENE ONE: REGRESSION

Music and Lyrics by
JOHN PETRUCCI



Moderately slow $\text{♩} = 112$ ($\text{♩} = \text{♩}^3$)

Fade in at (:52)

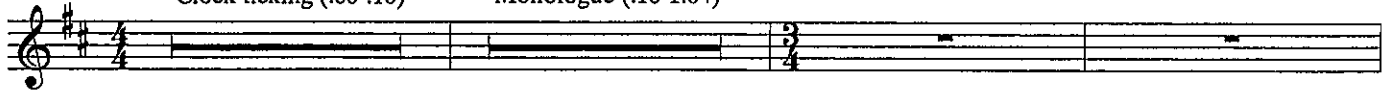
Acous. Gtr.
mf



Intro:

Clock ticking (:00-:10)

Monologue (:10-1:04)



Bm/A

E/G#

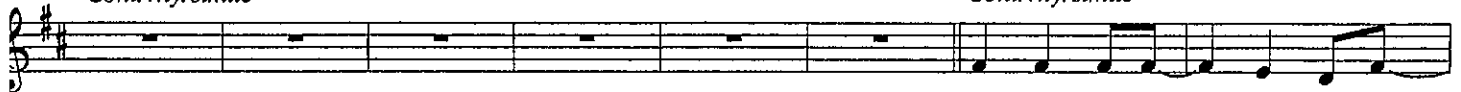
A7sus

A7

Verse:

D

Cont. rhy. simile



Safe in the light__ that sur - rounds.

D/F#

G5

G/B

D

D/C#



— me.

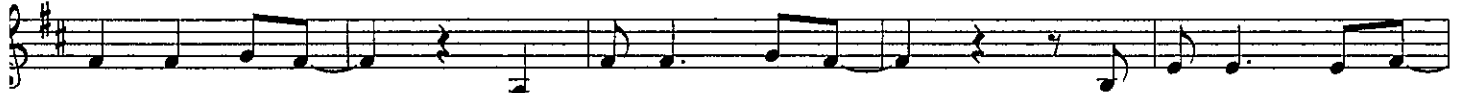
Free of the fear__ and the pain.__

My

Bm

Bm/A

E/G#



sub - con - scious mind__

starts spin - ning through time__

to re - join the past__

A7sus

A7

D

D/F#



— once a - gain.__

And noth - ing seems real,

I'm start - ing to feel__

G5

G/B

D

D/C#

Bm



— lost in the haze__ of a dream.__

And as I draw near,__

Bm/A

E/G#

A7sus

A7



— the scene be - comes clear like watch - ing my life on a screen.

G5

G/B

A7

A7sus

D



Hel - lo, Vic - tor - i - a, so glad to see you, my friend.

Acous. Gtr.

rit.

