

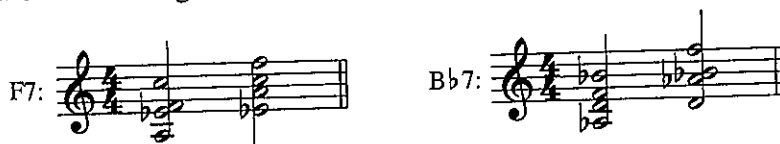
CHAPTER

2

VOICINGS

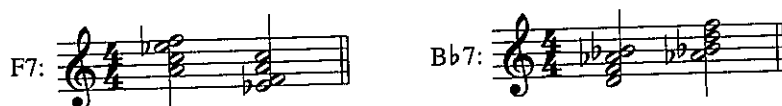
Voicing Selection

Open Voicing refers to an arrangement of notes in which the distance between the outer voices of a chord is larger than an octave.



Generally, open voicing will sound fuller than close voicing, as it encompasses a larger portion of the keyboard. Because the intervals between the mallets in each hand are typically fourths, fifths or tritones, open-position chords are physically easy to execute on the vibraphone.

Close Voicing refers to an arrangement of notes in which the distance between the outer voices of a chord is less than an octave.



Generally, close voicing sounds rather thin, as it encompasses a rather small portion of the keyboard. Because the intervals between the mallets in each hand are generally seconds and thirds, close-position chords are physically more difficult to execute on the vibraphone than open-position chords, especially in the upper registers in which the bars are not as wide.

Combination Voicing refers to a situation in which open and close versions of the same chord are played in sequence.

