

Commissioned for, and dedicated to Reiko Kono, with great warmth and affection

CONCERTINO FOR MARIMBA AND WINDS

Solo Marimba

ALFRED REED
ASCAP

I. Nocturne

Lento (♩ = c. 42)

Solo

012-2507-00

p
(soft mallets)

Cadenza
pp
mp poco a poco accel. e cresc.

8 a tempo (poco piu mosso)

rit. e dim. al
pp

Solo
mf
ritardando

16 a tempo - molto sostenuto (♩ = c. 42)

W.Ws.

24

32

Solo

40

poco a poco dim.

poco rit.

50

a tempo—poco piu mosso

66

(hard mallets)

mp cresc.

74

f marc.

molto cresc.

84

poco a poco dim.

poco ritenuto *pp*

92 Cadenza Solo

p *cresc. e accel.*

al *f* *f* ³ (*presto*) ³ ³ ³ *pp*

p *p* *poco a poco cresc. e accel.*

f *p* *al* *rit.*

p *lightly* *rit.*

p *lightly* *rit.*

p *lightly* *rit.*

p *lightly* *rit.*

p *lightly* *rit.*

p *lightly* *rit.*

p *lightly* *rit.*

93 *a tempo*—*poco meno mosso* (♩ = c. 50)

pp *p* *lightly* *sim.*

pp *Solo* *ppp*

II. Scherzetto

Allegretto grazioso (♩ = c. 92 - 96)

mp (medium hard mallets)

sim.

15 *mf*

23 *mp*

30 *sim.*

37 *mp*

45 *mp* gliss.

53 *mf*

Solo Marimba - 8

65



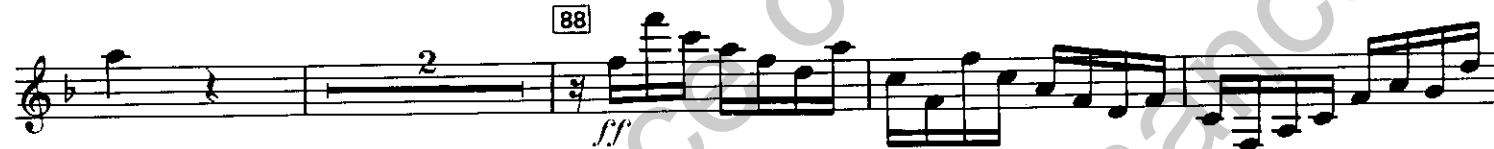
72



80



88



96



D.C. al Coda

Coda



114



III. Toccata

Bright rock / boogie tempo (♩ - c. 76-80) (♩ = ♩³) throughout)

ff (hardest mallets)

sim.

mf

ff

17

Solo

ff

31

p

sim.

43

ff

Musical staff with chords and accents. The staff contains several measures of music, primarily consisting of chords with accents (marked with a 'v' above the notes). The key signature has one flat (B-flat).

55

Solo!

p

Musical staff starting at measure 55, featuring a series of triplet eighth notes. The dynamics are marked *p* (piano).

Musical staff with chords and triplet eighth notes. The dynamics are marked *poco a poco cresc.* (poco a poco crescendo).

sempre cresc.

64

Musical staff with triplet eighth notes. Dynamics are marked *ff* (fortissimo) and *mf* (mezzo-forte).

Musical staff with triplet eighth notes. Dynamics are marked *cresc.* (crescendo) and *f* (forte).

Musical staff with triplet eighth notes. Dynamics are marked *f* (forte).

Musical staff with triplet eighth notes. Dynamics are marked *ff* (fortissimo).

80

Musical staff with triplet eighth notes. Dynamics are marked *f* (forte).

Musical staff with triplet eighth notes. Dynamics are marked *f* (forte).

Musical staff with triplet eighth notes. Dynamics are marked *lightly*.

Musical staff with triplet eighth notes. Dynamics are marked *lightly*.

92

Musical score for marimba, measures 92-107. The score is written in bass clef with a 2/4 time signature. It features a series of eighth-note patterns, many of which are grouped as triplets. The dynamics include *p* (piano) and *(poco)* (poco). There are several slurs and accents throughout the passage.

108

Musical score for marimba, measures 108-115. The score is written in treble clef. It begins with a *f* (forte) dynamic. There are rests of 2 measures, followed by a *Soli* section starting at measure 110 with a *f* dynamic. The passage includes eighth-note patterns and triplets.

116

Musical score for marimba, measures 116-123. The score is written in treble clef. It features a 2-measure rest, followed by eighth-note patterns with a *f* dynamic, and a 6-measure rest.

124

Musical score for marimba, measures 124-135. The score is written in treble clef. It features a series of chords, many of which are beamed together. The dynamics include *f* (forte) and *f* (ritmico).

136

Musical score for marimba, measures 136-140. The score is written in treble clef. It features eighth-note patterns with a *ff* (fortissimo) dynamic. The passage concludes with a final chord.

Musical staff with notes and dynamics. Dynamics include *ff* and *f*.

Musical staff with triplets and dynamics. Dynamics include *ff* and *f*. A *Solo* marking is present above a triplet.

148

Musical staff with chords and dynamics. Dynamics include *p* and *sempre p*.

Musical staff with chords and dynamics. Dynamics include *p* and *sempre p*.

Musical staff with chords and dynamics. Dynamics include *p* and *sempre p*.

160

Musical staff with triplets and dynamics. Dynamics include *ff molto marc.* and *sim.*

Musical staff with triplets and dynamics. Dynamics include *ff molto marc.* and *sim.*

Musical staff with triplets and dynamics. Dynamics include *ff* and *Solo*.

172

Musical staff with triplets and dynamics. Dynamics include *mp* and *poco a poco cresc.*

Musical staff with triplets and dynamics. Dynamics include *mp* and *poco a poco cresc.*

Musical staff with triplets and dynamics. Dynamics include *al*, *fff*, and *sempre cresc.*