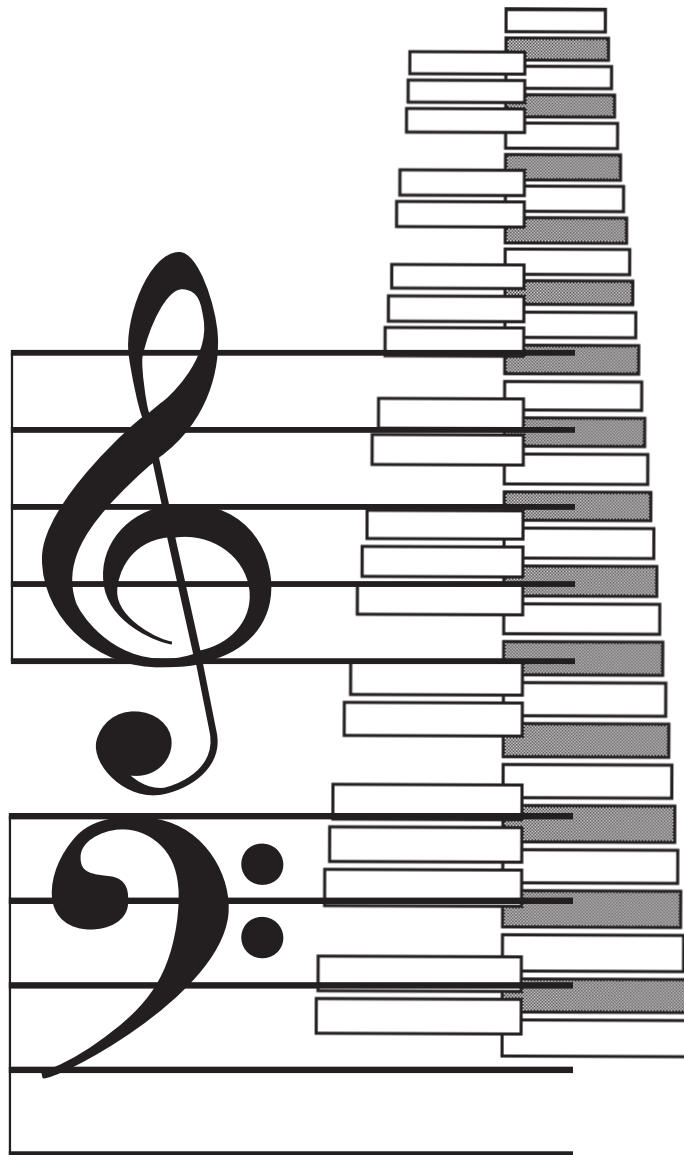


The Staff as a Drawing

One way to think about the musical staff is to imagine it as a drawing of the marimba keyboard. The lines and spaces of the staff represent each of the diatonic bars of the marimba.

Up and Down, Left and Right

When the noteheads on the staff move from lower to higher position they represent sounds moving from lower to higher pitches. When you play these notes on the marimba, your physical movement is actually from left to right. While the notes on the music move up and down, your hands at the marimba move left and right.



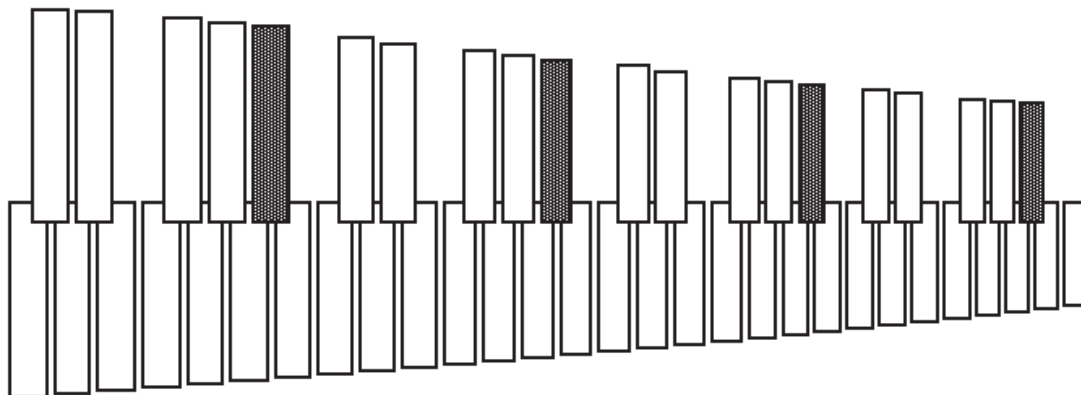
Finding Pitches on the Keyboard

The pattern of two and three bars on the accidentals give the visual cues necessary for finding all twelve pitches. In the following exercises, look carefully for how the pitch you are finding fits into this pattern. Practicing looking for each pitch on the staff, the drawing and on your marimba.

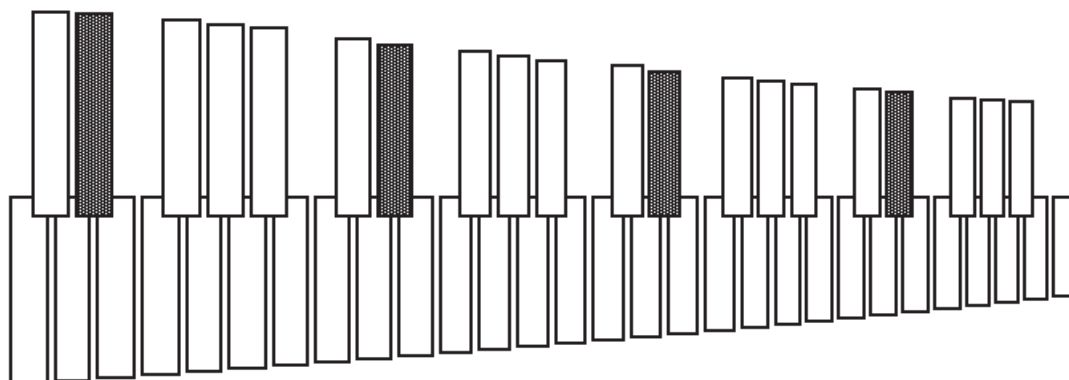
Practice for each pitch

- Study the notes on the staff
- Find the corresponding bars on the drawing (the shaded bars)
- Memorize their position in relationship to the pattern of the accidentals (use the lightly shaded reference bars when necessary)
- Find and play the notes on your marimba

B flat/A sharp



E flat/D sharp

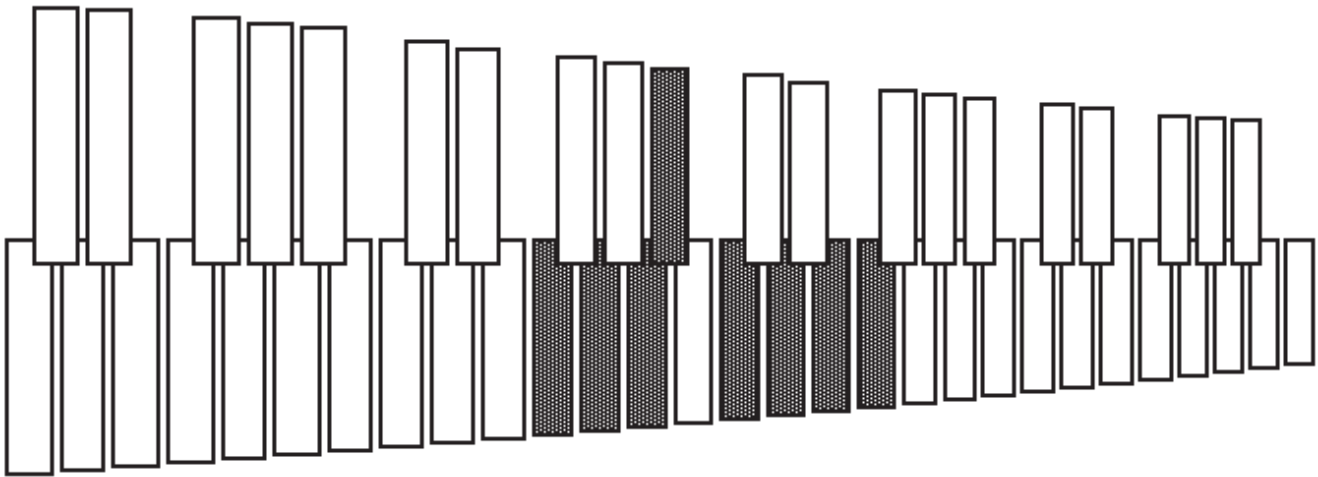
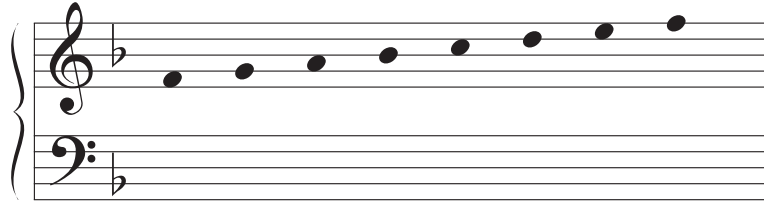




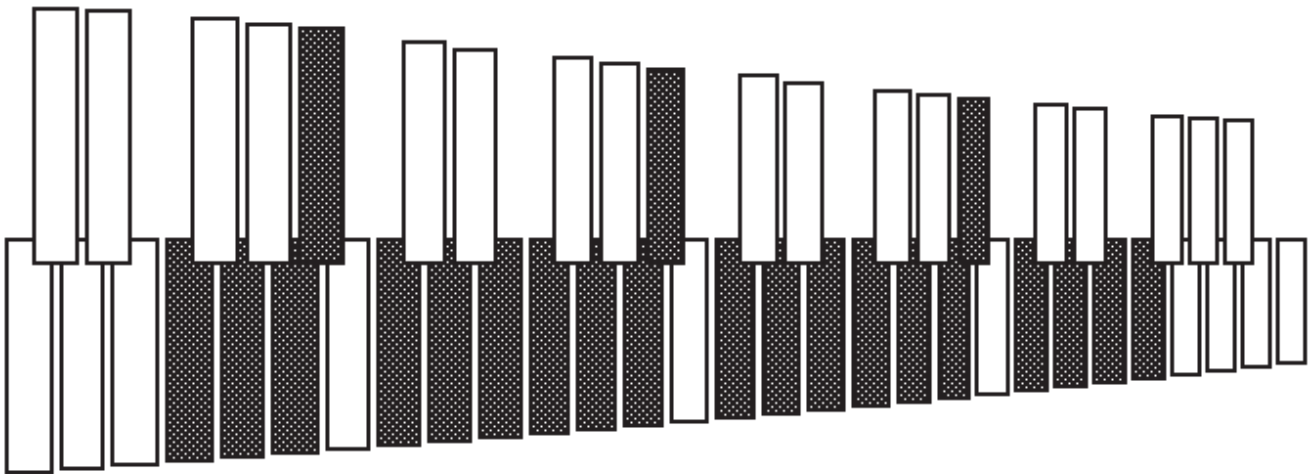
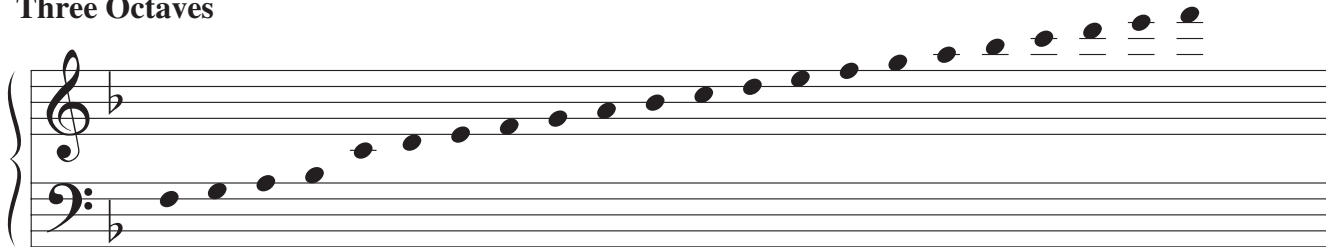
Listening Audio File:
pg 13-24 Major Scales.mp3

F Major Scale

One Octave



Three Octaves





Play Along Audio File:
pg 29 BbMA Scale Etude.mp3

Bb Major

1

Musical notation for measures 1-3 of the Bb Major scale etude. The treble clef contains the scale notes, and the bass clef is empty.

4

Musical notation for measures 4-6 of the Bb Major scale etude. The treble clef contains the scale notes, and the bass clef is empty.

7

Musical notation for measures 7-9 of the Bb Major scale etude. The treble clef contains the scale notes, and the bass clef is empty.

10

Musical notation for measures 10-12 of the Bb Major scale etude. The treble clef contains the scale notes, and the bass clef is empty.

13

Musical notation for measures 13-15 of the Bb Major scale etude. The treble clef contains the scale notes, and the bass clef is empty.



Play Along Audio File:
pg 50 G Melodic Minor Etude.mp3

G Melodic Minor

1

Measures 1-3 of the G Melodic Minor Etude. The piece is in 4/4 time with a key signature of two flats (B-flat and E-flat). The melody in the right hand starts on G4 and moves through A4, B-flat4, C5, D5, E-flat5, F5, and G5. The bass line in the left hand starts on G2 and moves through A2, B-flat2, C3, D3, E-flat3, F3, and G3.

4

Measures 4-6 of the G Melodic Minor Etude. The melody continues with notes G5, F5, E-flat5, D5, C5, B-flat4, A4, and G4. The bass line continues with notes G3, F3, E-flat3, D3, C3, B-flat2, A2, and G2.

7

Measures 7-9 of the G Melodic Minor Etude. The melody continues with notes G4, A4, B-flat4, C5, D5, E-flat5, F5, and G5. The bass line continues with notes G2, A2, B-flat2, C3, D3, E-flat3, F3, and G3.

10

Measures 10-12 of the G Melodic Minor Etude. The melody continues with notes G4, A4, B-flat4, C5, D5, E-flat5, F5, and G5. The bass line continues with notes G2, A2, B-flat2, C3, D3, E-flat3, F3, and G3.

13

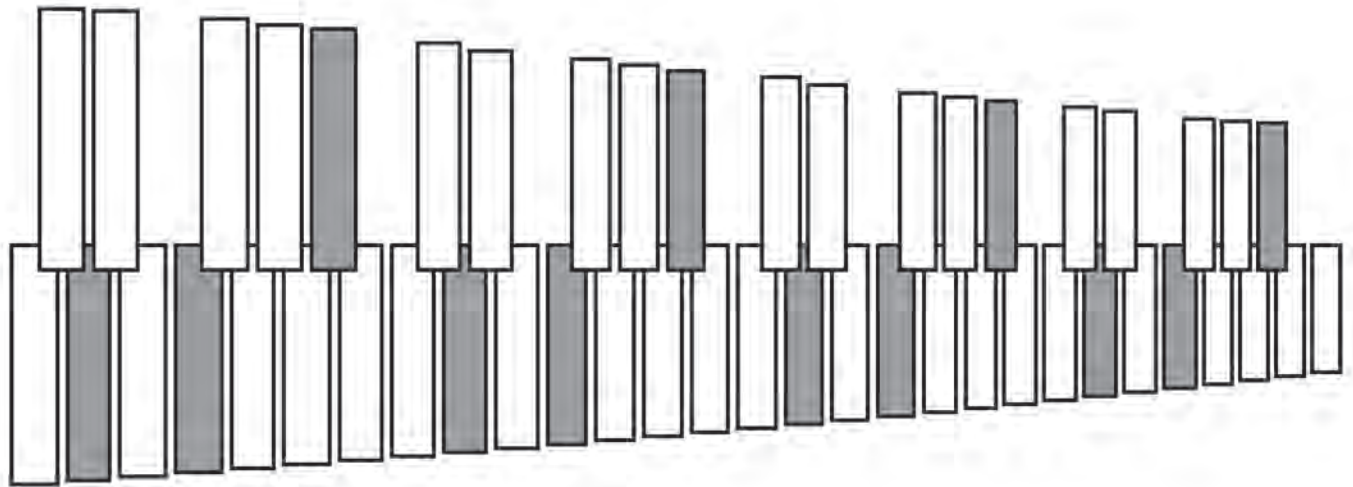
Measures 13-15 of the G Melodic Minor Etude. The melody continues with notes G4, A4, B-flat4, C5, D5, E-flat5, F5, and G5. The bass line continues with notes G2, A2, B-flat2, C3, D3, E-flat3, F3, and G3. The piece concludes with a double bar line.



Listening Audio File:
pg 81 BbMA and Bbmi Chords.mp3

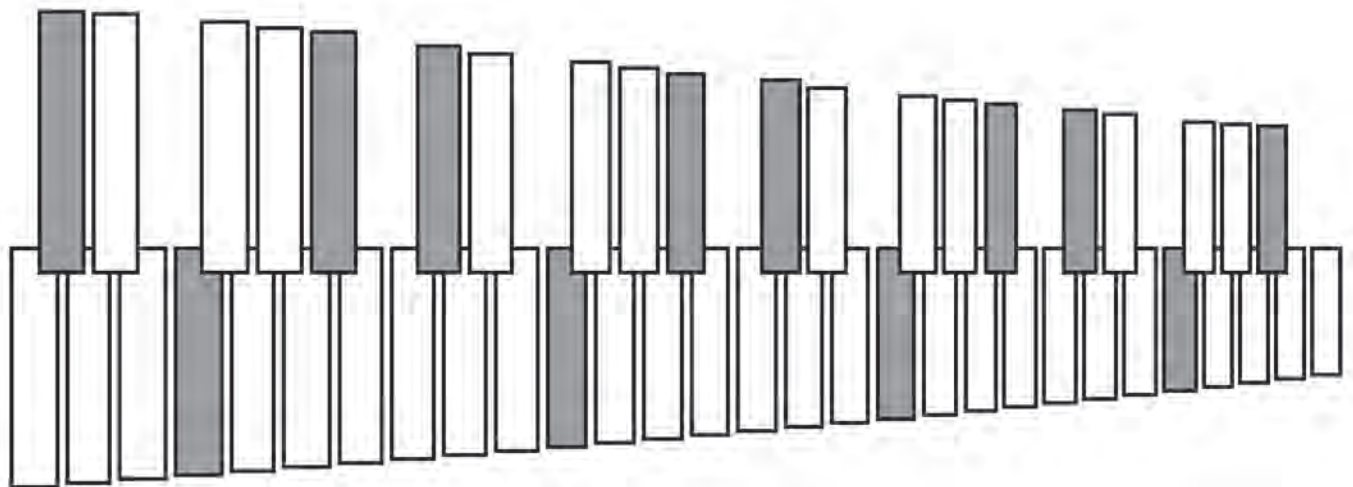
Bb Major

Musical notation for the Bb Major scale and chords. The scale is shown in both treble and bass clefs. The treble clef starts on Bb4 and the bass clef starts on Bb3. The scale notes are Bb, C, D, Eb, F, G, Ab, Bb. To the right of the scale, four chord diagrams are shown: Bb major triad (Bb, D, F), Bb major dyad (Bb, D), Bb major dyad (Bb, F), and Bb major triad (Bb, D, F).



Bb Minor

Musical notation for the Bb Minor scale and chords. The scale is shown in both treble and bass clefs. The treble clef starts on Bb4 and the bass clef starts on Bb3. The scale notes are Bb, C, D, Eb, F, G, Ab, Bb. To the right of the scale, four chord diagrams are shown: Bb minor triad (Bb, D, F), Bb minor dyad (Bb, D), Bb minor dyad (Bb, F), and Bb minor triad (Bb, D, F).





Play Along Audio File:
pg 93 FMA Chord Etude.mp3

F Major

1

4

7

10

13



Listening Audio File:
pg 119a German Dance.mp3

German Dance

Allegretto

Anonymous

Musical score for German Dance, measures 1-24. The score is in treble clef, 2/4 time, and B-flat major. It features a melody with various dynamics: *mf* (measures 1-6), *p* (measures 7-12), *f* (measures 13-18), *mp* (measures 19-20), and *cresc.* (measures 21-24). The piece concludes with a repeat sign at the end of measure 24.



Listening Audio File:
pg 119b Gypsy Dance.mp3

Gypsy Dance

Allegro

Haydn

Musical score for Gypsy Dance, measures 1-13. The score is in treble clef, 2/4 time, and B-flat major. It features a melody with various dynamics: *mf* (measures 1-4), *p* (measures 5-8), *mf* (measures 9-12), and *f* (measures 13-16). The piece concludes with a repeat sign at the end of measure 16.



Listening Audio File:
pg 141 Allegro.mp3

Allegro

Sonata, opus 5 no. 6

Arcangelo Corelli

Allegro

1 *f*

4 *mf*

7

10

13 *fmf*

16 *cresc.*

19 *fp*

22 *cresc.*

25 *f* *p*

28 *mf* *f*



Play Along Audio Files:
See Page 152 for filenames

Musical staff with rhythmic notation and fingerings: L R L R L L R L R L L R L R L L R L R L R R R L R L R L R

Musical staff with rhythmic notation and fingerings: R L R L R R L R L R R L R L R R L R L R R L R L R L

11 quarter=92, fourths

Musical staff with rhythmic notation and fingerings: L R L R L R L R L R L R L R R L R L R L R L R L R L R L R L R L

12 quarter=80, chromatic

13 quarter=80, chromatic

Musical staff with rhythmic notation and fingerings: L R L R L R L R L R L R L R L

Musical staff with rhythmic notation and fingerings: R L R L R L R L R L R L R L R

Chord and Arpeggio Based Exercises

14 quarter=80, fourths

15 quarter=80, fourths

Musical staff with rhythmic notation and fingerings: L R L R L R L R L R L R L R L L R L R L R L R L R L R L R L R L

16 quarter=80, fifths

Musical staff with rhythmic notation and fingerings: L R L R L R L R L R L R L R L R L R L R L R L R L R L R L R L R

17 quarter=70, fourths

18 quarter=80, chromatic

Musical staff with rhythmic notation and fingerings: R L R L R L R R L R L R L

19 dotted quarter=92, chromatic

20 dotted quarter=92, chromatic

21 dotted quarter=92, chromatic

22 dotted quarter=92, chromatic

Musical staff with rhythmic notation and fingerings: R R L R L R R L R L R L R L R L R L R L R L R L R L R L R L R L