

# Row-Loff Productions

"Foremost In Marching And Concert Percussion Literature"

P.O. Box 292671 • Nashville, TN 37229 • 1-800-624-8001 • Fax 1-615-885-0370

## ME TARZAN

by Chris Crockarell

Medium - 2:08 / 8 - 12 Players

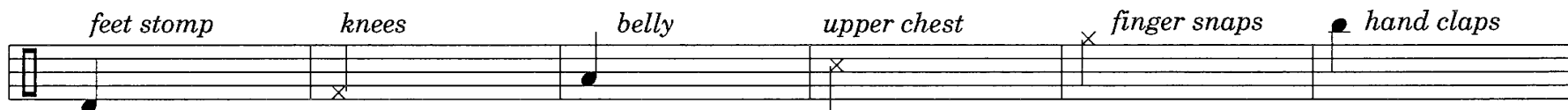
### Instrumentation

Bellies, Chests, Hands, Knees, Feet

### Performance Notes

1. Players should be seated forward with feet flat on the ground and bodies in an upright posture facing the audience.
2. Upper chest and knees should be played with flat palms while bellies should be played with cupped hands creating a fatter popping sound.
3. All hand claps and finger snaps should be played at head level.
4. At least 2 players per part is recommended, 3 players is better while 4 players is *very* effective.
5. For best comical effect, ham-up the ending as much as possible by having the players acknowledge each other while applauding as well as hamming-it-up with the audience. "Bravo!", "More, More!", "What a Band!"..... Have a good time with it!

### Tarzan Key



"ME TARZAN" by Chris Crockarell © 1995 Row-Loff Productions  
International Copyright Secured All Rights Reserved  
This arrangement © 1995 Row-Loff Productions

# Me Tarzan

by Chris Crockarell

$\text{♩} = 104$

Swing 8th's

Tarzan

Jane

Boy

Cheetah

Tarzan

Jane

Boy

Cheetah

# Me Tarzan

pg 2

Musical score for the first system, measures 9-12. The score is arranged in four staves: Tarzan, Jane, Boy, and Cheetah. Measure numbers 9, 10, 11, and 12 are indicated above the Tarzan staff. Tarzan's part consists of a rhythmic pattern of eighth notes with 'x' marks above them. Jane, Boy, and Cheetah have accompaniment parts with 'x' marks above notes. The Cheetah staff includes a bass line with quarter notes.

Musical score for the second system, measures 13-16. The score is arranged in four staves: Tarzan, Jane, Boy, and Cheetah. Measure numbers 13, 14, 15, and 16 are indicated above the Tarzan staff. Tarzan's part continues with the same rhythmic pattern. Jane's part features triplets, indicated by a '3' above groups of notes. Boy and Cheetah have accompaniment parts similar to the first system. The Cheetah staff includes a bass line with quarter notes.