



Molenaar Edition

# Le Chant de L'Arbre

Serge Lancen

Art.Nr: 011536100  
Difficulty: D  
Duration: 12:19  
Concert Band

## Original Pieces

Colofon

### Molenaar Edition BV

Industrieweg 23  
NL 1521 ND Wormerveer  
the Netherlands  
Phone: +31 (0)75 - 628 68 59  
Fax: +31 (0)75 - 621 49 91  
Email: office@molenaar.com  
Website: www.molenaar.com

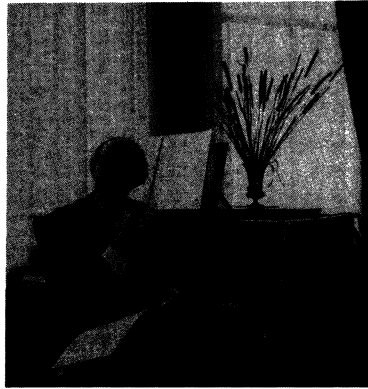
© Molenaar Edition BV - Wormerveer - the Netherlands

Copying of sheetmusic from this booklet is illegal.

Mini - Score

www.molenaar.com

Molenaar Edition



SERGE LANCEN werd in 1922 te Parijs geboren. Zijn leven staat in het teken van de muziek. Zijn eerste werk schreef hij al op vierjarige leeftijd. Hij studeerde aan het Parijse Conservatorium bij Tony Aubin, schreef in 1949 Etudes die bekroond werden en ontving enige tijd later de „Prix de Rome“. Zijn oeuvre als componist is zeer gevarieerd en bevat o.a. een aantal soloconcerten (voor fluit, contrabas en piano), een Sinfonietta en een groot aantal werken in het lichte symphonische genre (veel opdrachten van de Franse radio), kamermusiek, filmmusiek en de laatste tien jaar verschillende werken voor harmonieorkest, zoals de „Manhattan Symphonie“, „Festival in Kerkrade“, „Symphonie de Paris“, „Le Chant de l'Arbre“, „Le Mont St. Michel“ en het „Parade Concerto“ voor piano en harmonieorkest, werken waarin de componist op ruime wijze gebruik maakt van het veelkleurige palet dat het harmonieorkest biedt.

SERGE LANCEN was born in Paris in 1922. The whole of his life has been dominated by music. He wrote his first work at the age of four. He studied with Tony Aubin at the Paris Conservatoire. In 1949 he won a prize for his Etudes, and some time later he was awarded the „Prix de Rome“. His work as composer is very varied and includes a number of solo concert (for flute, double bass and piano), a Sinfonietta and a large number of works in the light symphonic genre (many of these commissioned by the French radio), chamber music, film music, and during the last ten years various works for wind band, such as the „Manhattan Symphony“, „Festival in Kerkrade“, „Symphonie de Paris“, „Le Chant de l'Arbre“, „Le Mont St. Michel“ and the „Parade Concerto“ for piano and wind band.

SERGE LANCEN naquit à Paris en 1922. Toute sa vie se place sous le signe de la musique: c'est dès l'âge de 4 ans qu'il écrit sa première oeuvre. Il étudia au Conservatoire de Paris sous la direction de Tony Aubin, composa en 1949 des Etudes qui lui valurent un prix, et fut peu de temps après lauréat du „Prix de Rome“. Son oeuvre de compositeur, d'une grande variété, comprend notamment une série de concertos pour divers instruments solistes (flûte, contrebasse et piano), une Sinfonietta et un grand nombre d'oeuvres symphoniques légères (commandées par la radio française), de la musique de chambre, des musiques de film et, au cours des 10 dernières années, différentes oeuvres pour orchestre harmonique, telles que la „Manhattan Symphonie“, „Festival à Kerkrade“, la „Symphonie de Paris“, „Le Chant de l'Arbre“, „Le Mont St-Michel“ et le „Parade Concerto“ pour piano et orchestre harmonique, dans lesquelles le compositeur puise généreusement à la palette bigarrée qu'offre l'orchestre d'harmonie.

SERGE LANCEN wurde 1922 in Paris geboren. Sein Leben steht im Zeichen der Musik. Sein erstes Werk schrieb er bereits im Alter von vier Jahren. Er studierte am Pariser Konservatorium bei Tony Aubin, schrieb 1949 berühmte gewordene Etüden und wurde einige Zeit später der „Prix de Rome“ laureat. Sein Oeuvre als Komponist ist sehr vielseitig und umfasst unter anderem eine Reihe von Solokonzerten (für Flöte, Kontrabaß und Piano), eine Sinfonietta und eine große Anzahl von Werken im leichten symphonischen Genre (viele Aufträge der französischen Radio), Kammermusik, Filmmusik und, in den letzten zehn Jahren, verschiedene Werke für Harmonieorchester, wie die „Manhattan Symphonie“, „Festival in Kerkrade“, die „Symphonie de Paris“, „Le Chant de l'Arbre“, „Le Mont St. Michel“ und das „Parade Concerto“ für Klavier und Harmonieorchester, in denen der Komponist großzügig die bunte Palette des Harmonieorchesters nutzt.

## LE CHANT DE L'ARBRE

A mon ami Roger Thirault

duration = 213 minutes pour grand orchestre d'harmonie (or band)  
Commande de l'état

- Le Chant de l'Arbre, poème symphonique, chante la vie de l'Arbre à travers les saisons.
- C'est l'Été. Eclatant de lumière, ik respandit; secoué parfois par de violents orages.
- Avec l'arrivée de l'Automne, son feuillage se dore, se détache voltige et vient joncher le sol.
- Le sommeil hivernal l'envahit.
- Mais voici le Printemps. Tout renaît; et l'Arbre à nouveau s'épanouit.

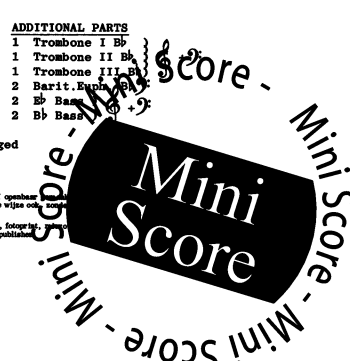
### INSTRUMENTATION "LE CHANT DE L'ARBRE" - 01.1536.10

#### HARMONIE / CONCERT BAND / SYMPHONIC BAND

1 Full Score	2 Horn I
1 Piccolo C	1 Horn II
8 Flute I + II	1 Horn III } Eb/F
2 Oboe I + II	1 Tenorhorn I
1 Cor Anglais	1 Tenorhorn II
2 Bassoon I + II	2 Trombone I C
2 Solo Clarinet I + II	2 Trombone II C
4 Clarinet I A	2 Trombone III C
4 Clarinet I B	2 Barit. Euph. C
4 Clarinet II	2 Barit. Euph. Bb
4 Clarinet III	1 Stringbass C
1 Alto Clarinet	4 Basses (Tuba) C I + II
1 Bass Clarinet	1 Triapani
1 Alto Saxophone I	3 Percussion
1 Alto Saxophone II	(Cymb., Xylophone, Glockenspiel, Triangel)
2 Tenor Saxophone I + II	
1 Baritone Saxophone	
1 Bass Saxophone	
1 Flügelhorn I	
1 Flügelhorn II	
2 Cornet I	
2 Cornet II	
2 Trumpet I	
2 Trumpet II	
2 Trumpet III	

x = N.O. = Non obligé, not obliged

Niets van deze uitgave mag worden verspreid of openbaar door middel van druk, fotocoopy, microfilm of welke andere wijze ook, voorziedende toestemming van de uitgever.  
No part of this book may be produced in any form of print, photograph or any other means without written permission of the publisher.



1.2. 3. off. Flageolet

01.1586.10

Mini Score

1.2. 3. off. Flageolet

01.1586.10

Mini Score

cresc..... 2 a tempo

01.1586.10

Mini Score

01.1586.10

Mini Score

Fl. *cresc.*

Ob. *cresc.*

Cl. *cresc.*

Bs. *cresc.*

Horn *cresc.*

Trp. *cresc.*

Tbn. *cresc.*

Perc. *cresc.*

01.1586.10

Fl. *cresc.*

Ob. *cresc.*

Cl. *cresc.*

Bs. *cresc.*

Horn *cresc.*

Trp. *cresc.*

Tbn. *cresc.*

Perc. *cresc.*

01.1586.10

Fl. *Allegretto J=66*

Ob. *Allegretto J=66*

Cl. *Allegretto J=66*

Bs. *Allegretto J=66*

Horn *Allegretto J=66*

Trp. *Allegretto J=66*

Tbn. *Allegretto J=66*

Perc. *Allegretto J=66*

01.1586.10

Fl. *Allegretto J=66*

Ob. *Allegretto J=66*

Cl. *Allegretto J=66*

Bs. *Allegretto J=66*

Horn *Allegretto J=66*

Trp. *Allegretto J=66*

Tbn. *Allegretto J=66*

Perc. *Allegretto J=66*

01.1586.10

Flc.  
Fl.  
Ob.  
Cl.  
Fg.  
Bbpt+Cl.  
BbCl.Sol.  
BbCl. 1.  
BbCl. 2.  
BbCl. 3.  
BbCl. Alt.  
BbCl. Bar.  
Bb Sax. Alt.  
Bb Sax. Ten.  
Bb Sax. Bar.  
Bb Sax. Bar.  
Horn F.  
Horn T.  
Trp.  
Trb.  
Bb Cor.  
Bb Bugl.  
Bb Bar.  
Euph. C.  
Bass C.  
Cb. Cordn.  
Timp.  
Perc.

01.1536.10

Flc.  
Fl.  
Ob.  
Cl.  
Fg.  
Bbpt+Cl.  
BbCl.Sol.  
BbCl. 1.  
BbCl. 2.  
BbCl. 3.  
BbCl. Alt.  
BbCl. Bar.  
Bb Sax. Alt.  
Bb Sax. Ten.  
Bb Sax. Bar.  
Bb Sax. Bar.  
Horn F.  
Horn T.  
Trp.  
Trb.  
Bb Cor.  
Bb Bugl.  
Bb Bar.  
Euph. C.  
Bass C.  
Cb. Cordn.  
Timp.  
Perc.

01.1536.10

Flc.  
Fl.  
Ob.  
Cl.  
Fg.  
Bbpt+Cl.  
BbCl.Sol.  
BbCl. 1.  
BbCl. 2.  
BbCl. 3.  
BbCl. Alt.  
BbCl. Bar.  
Bb Sax. Alt.  
Bb Sax. Ten.  
Bb Sax. Bar.  
Bb Sax. Bar.  
Horn F.  
Horn T.  
Trp.  
Trb.  
Bb Cor.  
Bb Bugl.  
Bb Bar.  
Euph. C.  
Bass C.  
Cb. Cordn.  
Timp.  
Perc.

01.1536.10

Flc.  
Fl.  
Ob.  
Cl.  
Fg.  
Bbpt+Cl.  
BbCl.Sol.  
BbCl. 1.  
BbCl. 2.  
BbCl. 3.  
BbCl. Alt.  
Cl. Bar.  
Bb Sax. Alt.  
Bb Sax. Ten.  
Bb Sax. Bar.  
Bb Sax. Bar.  
Horn F.  
Horn T.  
Trp.  
Trb.  
Bb Cor.  
Bb Bugl.  
Bb Bar.  
Euph. C.  
Bass C.  
Cb. Cordn.  
Timp.  
Perc.

01.1536.10

Fl.  
Ob.  
Cl.  
Fg.  
B♭ptCl.  
B♭Cl. Sol.  
B♭Cl. 1.  
B♭Cl. 2.  
B♭Cl. Alt.  
B♭Cl. Bar.  
B♭ Sax. Alt.  
B♭ Sax. Ten.  
B♭ Sax. Bar.  
B♭ Sax. Bar.  
Horn F.  
B♭ Trp.  
Trb.  
B♭ Cor.  
B♭ Bass.  
B♭ Bass.  
Euph. C.  
Bass C.  
Cb. Cor Ang.  
Timp.  
Perc.

*ritenuto*

01.1586.10

Fl.  
Ob.  
Cl.  
Fg.  
B♭ptCl.  
B♭Cl. Sol.  
B♭Cl. 1.  
B♭Cl. 2.  
B♭Cl. Alt.  
B♭Cl. Bar.  
B♭ Sax. Alt.  
B♭ Sax. Ten.  
B♭ Sax. Bar.  
B♭ Sax. Bar.  
Horn F.  
B♭ Trp.  
Trb.  
B♭ Cor.  
B♭ Bass.  
B♭ Bass.  
Euph. C.  
Bass C.  
Cb. Cor Ang.  
Timp.  
Perc.

*Lento*  $\text{♩} = 36$

*2. def. Oboe*  
*Forte*

*3. def. Horn 1.*  
*Forte*

01.1586.10

Fl.  
Ob.  
Cl.  
Fg.  
B♭ptCl.  
B♭Cl. Sol.  
B♭Cl. 1.  
B♭Cl. 2.  
B♭Cl. Alt.  
B♭Cl. Bar.  
B♭ Sax. Alt.  
B♭ Sax. Ten.  
B♭ Sax. Bar.  
B♭ Sax. Bar.  
Horn F.  
B♭ Trp.  
Trb.  
B♭ Cor.  
B♭ Bass.  
B♭ Bass.  
Euph. C.  
Bass C.  
Cb. Cor Ang.  
Timp.  
Perc.

*ritenuto*

01.1586.10

Fl.  
Ob.  
Cl.  
Fg.  
B♭ptCl.  
B♭Cl. Sol.  
B♭Cl. 1.  
B♭Cl. 2.  
B♭Cl. Alt.  
B♭Cl. Bar.  
B♭ Sax. Alt.  
B♭ Sax. Ten.  
B♭ Sax. Bar.  
B♭ Sax. Bar.  
Horn F.  
B♭ Trp.  
Trb.  
B♭ Cor.  
B♭ Bass.  
B♭ Bass.  
Euph. C.  
Bass C.  
Cb. Cor Ang.  
Timp.  
Perc.

*acc. poco a poco al...*

*2. def. Cl. Bb*  
*3. def. es. 1.*

*1. def. es. 1.*  
*2. def. es. 1.*

01.1586.10

Allegro (♩ = 80)

01.1556.10

01.1556.10

01.1556.10

01.1556.10

Flc.  
Fl.  
Ob.  
Cl.  
Fg.  
BspnCl.  
BspnCl. Sbl.  
A.  
BspnCl. 1.  
BspnCl. 2.  
BspnCl. 3.  
BspnCl. Alt.  
BspnCl. Bar.  
BspnCl. Bar.  
Horn F.  
Horn F.  
Bspn Tpt.  
Tbn.  
Tbn.  
Bspn Cor.  
Bspn Prof.  
Bspn Bar.  
Bspn C.  
Bspn C.  
Cb. Corde.  
Timp.  
Perc.

01.1586.10

Flc.  
Fl.  
Ob.  
Cl.  
Fg.  
BspnCl.  
BspnCl. Sbl.  
A.  
BspnCl. 1.  
BspnCl. 2.  
BspnCl. 3.  
BspnCl. Alt.  
BspnCl. Bar.  
BspnCl. Bar.  
Horn F.  
Horn F.  
Bspn Tpt.  
Tbn.  
Tbn.  
Bspn Cor.  
Bspn Prof.  
Bspn Bar.  
Bspn C.  
Bspn C.  
Cb. Corde.  
Timp.  
Perc.

01.1586.10

Flc.  
Fl.  
Ob.  
Cl.  
Fg.  
BspnCl.  
BspnCl. Sbl.  
A.  
BspnCl. 1.  
BspnCl. 2.  
BspnCl. 3.  
BspnCl. Alt.  
BspnCl. Bar.  
BspnCl. Bar.  
Horn F.  
Horn F.  
Bspn Tpt.  
Tbn.  
Tbn.  
Bspn Cor.  
Bspn Prof.  
Bspn Bar.  
Bspn C.  
Bspn C.  
Cb. Corde.  
Timp.  
Perc.

01.1586.10

Flc.  
Fl.  
Ob.  
Cl.  
Fg.  
BspnCl.  
BspnCl. Sbl.  
A.  
BspnCl. 1.  
BspnCl. 2.  
BspnCl. 3.  
BspnCl. Alt.  
BspnCl. Bar.  
BspnCl. Bar.  
Horn F.  
Horn F.  
Bspn Tpt.  
Tbn.  
Tbn.  
Bspn Cor.  
Bspn Prof.  
Bspn Bar.  
Bspn C.  
Bspn C.  
Cb. Corde.  
Timp.  
Perc.

01.1586.10







Musical score for page 34, measures 1-10. The score includes parts for Piccolo, Flute, Oboe, Clarinet, Bassoon, and various woodwinds. A large, semi-transparent watermark reading "Mini Score" is overlaid on the bottom right of the page.

Musical score for page 35, measures 11-20. The score includes parts for Piccolo, Flute, Oboe, Clarinet, Bassoon, and various woodwinds. A large, semi-transparent watermark reading "Mini Score" is overlaid on the bottom right of the page.

Musical score for page 36, measures 21-30. The score includes parts for Piccolo, Flute, Oboe, Clarinet, Bassoon, and various woodwinds. A large, semi-transparent watermark reading "Mini Score" is overlaid on the bottom right of the page.

Musical score for page 37, measures 31-40. The score includes parts for Piccolo, Flute, Oboe, Clarinet, Bassoon, and various woodwinds. A large, semi-transparent watermark reading "Mini Score" is overlaid on the bottom right of the page.

Musical score for page 38, featuring various instruments including Piccolo, Flute, Oboe, Clarinet, Bassoon, Saxophone, Trumpet, Trombone, Horn, Percussion, and strings. The score includes dynamic markings such as *mf*, *dim*, and *pp*.

Mini Score

Musical score for page 39, continuing the orchestral arrangement with similar instrumentation to page 38. It includes tempo markings such as *molto* and *Lento* with a metronome marking of  $\text{♩} = 40$ .

Mini Score

Musical score for page 40, showing the continuation of the orchestral score. It includes dynamic markings such as *mf*, *dim*, and *pp*.

Mini Score

Musical score for page 41, featuring a change in tempo to *Allegretto* with a metronome marking of  $\text{♩} = 66$ . It includes dynamic markings such as *mf*, *dim*, and *pp*.

Mini Score

Musical score for page 42, featuring various instruments including Piccolo, Flute, Oboe, Clarinet, Bassoon, Saxophone, Trumpet, Trombone, Horn, Tuba, Euphonium, and Percussion. The score includes dynamic markings such as *f* and *ff*, and performance instructions like *1. off. Horn*. A large watermark reading "Mini Score" is overlaid on the page.

Musical score for page 43, featuring various instruments including Piccolo, Flute, Oboe, Clarinet, Bassoon, Saxophone, Trumpet, Trombone, Horn, Tuba, Euphonium, and Percussion. The score includes dynamic markings such as *f* and *ff*, and performance instructions like *1. off. Horn* and *Concise*. A large watermark reading "Mini Score" is overlaid on the page.

Musical score for page 44, featuring various instruments including Piccolo, Flute, Oboe, Clarinet, Bassoon, Saxophone, Trumpet, Trombone, Horn, Tuba, Euphonium, and Percussion. The score includes dynamic markings such as *f* and *ff*, and performance instructions like *1. off. Horn* and *1.2.*. A large watermark reading "Mini Score" is overlaid on the page.

Musical score for page 45, featuring various instruments including Piccolo, Flute, Oboe, Clarinet, Bassoon, Saxophone, Trumpet, Trombone, Horn, Tuba, Euphonium, and Percussion. The score includes dynamic markings such as *f* and *ff*, and performance instructions like *1. off. Horn*. A large watermark reading "Mini Score" is overlaid on the page.

Picc.  
Fl.  
Ob.  
Cl.  
Fg.  
E♭pHCl.  
B♭Cl. Sol.  
B♭Cl. 1.  
B♭Cl. 2.  
B♭Cl. 3.  
E♭Cl. Alt.  
B♭Cl. Bar.  
E♭ Sax. Alt. 1.  
E♭ Sax. Alt. 2.  
B♭ Sax. Ten.  
E♭ Sax. Bar.  
E♭ Sax. Bar.  
Horn F.  
Horn F.  
B♭Trp. 1.  
B♭Trp. 2.  
B♭Trp. 3.  
Trb. 1.  
Trb. 2.  
B♭Cor.  
B♭Bass.  
B♭Bass.  
Euph. C.  
Bass C.  
Ch. Corde.  
Timp.  
Perc.

01.1536.10

Picc.  
Fl.  
Ob.  
Cl.  
Fg.  
E♭pHCl.  
B♭Cl. Sol.  
B♭Cl. 1.  
B♭Cl. 2.  
B♭Cl. 3.  
E♭Cl. Alt.  
B♭Cl. Bar.  
E♭ Sax. Alt. 1.  
E♭ Sax. Alt. 2.  
B♭ Sax. Ten.  
E♭ Sax. Bar.  
E♭ Sax. Bar.  
Horn F.  
Horn F.  
B♭Trp. 1.  
B♭Trp. 2.  
B♭Trp. 3.  
Trb. 1.  
Trb. 2.  
B♭Cor.  
B♭Bass.  
B♭Bass.  
Euph. C.  
Bass C.  
Ch. Corde.  
Timp.  
Perc.

01.1536.10

Picc.  
Fl.  
Ob.  
Cl.  
Fg.  
E♭pHCl.  
B♭Cl. Sol.  
B♭Cl. 1.  
B♭Cl. 2.  
B♭Cl. 3.  
E♭Cl. Alt.  
B♭Cl. Bar.  
E♭ Sax. Alt. 1.  
E♭ Sax. Alt. 2.  
B♭ Sax. Ten.  
E♭ Sax. Bar.  
E♭ Sax. Bar.  
Horn F.  
Horn F.  
B♭Trp. 1.  
B♭Trp. 2.  
B♭Trp. 3.  
Trb. 1.  
Trb. 2.  
B♭Cor.  
B♭Bass.  
B♭Bass.  
Euph. C.  
Bass C.  
Ch. Corde.  
Timp.  
Perc.

01.1536.10

Picc.  
Fl.  
Ob.  
Cl.  
Fg.  
E♭pHCl.  
B♭Cl. Sol.  
B♭Cl. 1.  
B♭Cl. 2.  
B♭Cl. 3.  
E♭Cl. Alt.  
B♭Cl. Bar.  
E♭ Sax. Alt. 1.  
E♭ Sax. Alt. 2.  
B♭ Sax. Ten.  
E♭ Sax. Bar.  
E♭ Sax. Bar.  
Horn F.  
Horn F.  
B♭Trp. 1.  
B♭Trp. 2.  
B♭Trp. 3.  
Trb. 1.  
Trb. 2.  
B♭Cor.  
B♭Bass.  
B♭Bass.  
Euph. C.  
Bass C.  
Ch. Corde.  
Timp.  
Perc.

01.1536.10

01.1556.10

01.1556.10

01.1556.10

01.1556.10

01.1596.10

Mini Score

01.1596.10

Mini Score

01.1596.10

Mini Score

01.1596.10

Mini Score

Musical score for page 58, featuring various instruments including Flute, Oboe, Clarinet, Bassoon, Trumpet, Trombone, Horn, Percussion, and strings. The score includes dynamic markings such as *pp*, *ppp*, and *pppp*. A large black watermark with the text "Mini Score" is overlaid on the page.

Musical score for page 59, continuing the orchestral arrangement with various instruments and dynamic markings. A large black watermark with the text "Mini Score" is overlaid on the page.

Musical score for page 60, showing the continuation of the orchestral score with various instruments. A large black watermark with the text "Mini Score" is overlaid on the page.

Musical score for page 61, concluding the orchestral arrangement with various instruments and dynamic markings. A large black watermark with the text "Mini Score" is overlaid on the page.



① Andante  $\text{♩} = 44$

Fl.  $\text{f}$   $\text{del. 56}$

Ob.  $\text{pp}$

Cu.  $\text{pp}$

Fa.  $\text{pp}$

B♭ptCl.  $\text{pp}$

B♭Cl. Sol.  $\text{pp}$

B♭Cl. 1.  $\text{pp}$

B♭Cl. 2.  $\text{pp}$

B♭Cl. Alt.  $\text{pp}$

B♭Cl. Bar.  $\text{pp}$

Ed. Bar. Alt. 1.  $\text{pp}$

Ed. Bar. Alt. 2.  $\text{pp}$

Ed. Bar. Ten.  $\text{pp}$

Ed. Bar. Bar.  $\text{pp}$

Ed. Bar. Bar.  $\text{pp}$

Horn F.  $\text{pp}$

B♭Tpt. 1.  $\text{pp}$

B♭Tpt. 2.  $\text{pp}$

Tbn. 1.  $\text{pp}$

Tbn. 2.  $\text{pp}$

B♭Cor.  $\text{pp}$

B♭Bass. 1.  $\text{pp}$

B♭Bass. 2.  $\text{pp}$

Euph. C.  $\text{pp}$

Bass C.  $\text{pp}$

Ch. Contra.  $\text{pp}$

Timb.  $\text{pp}$

Perc.  $\text{pp}$

② Andante  $\text{♩} = 44$

1.  $\text{mf}$   $\text{Pizz.$

③ Andante  $\text{♩} = 44$

1.  $\text{mf}$   $\text{Pizz.$

01.1536.10

Fl.  $\text{pp}$

Ob.  $\text{pp}$

Cu.  $\text{pp}$

Fa.  $\text{pp}$

B♭ptCl.  $\text{pp}$

B♭Cl. Sol.  $\text{pp}$

B♭Cl. 1.  $\text{pp}$

B♭Cl. 2.  $\text{pp}$

B♭Cl. Alt.  $\text{pp}$

B♭Cl. Bar.  $\text{pp}$

Ed. Bar. Alt. 1.  $\text{pp}$

Ed. Bar. Alt. 2.  $\text{pp}$

Ed. Bar. Ten.  $\text{pp}$

Ed. Bar. Bar.  $\text{pp}$

Horn F.  $\text{pp}$

B♭Tpt. 1.  $\text{pp}$

B♭Tpt. 2.  $\text{pp}$

Tbn. 1.  $\text{pp}$

Tbn. 2.  $\text{pp}$

B♭Cor.  $\text{pp}$

B♭Bass. 1.  $\text{pp}$

B♭Bass. 2.  $\text{pp}$

Euph. C.  $\text{pp}$

Bass C.  $\text{pp}$

Ch. Contra.  $\text{pp}$

Timb.  $\text{pp}$

Perc.  $\text{pp}$

01.1536.10

Fl.  $\text{pp}$

Ob.  $\text{pp}$

Cu.  $\text{pp}$

Fa.  $\text{pp}$

B♭ptCl.  $\text{pp}$

B♭Cl. Sol.  $\text{pp}$

B♭Cl. 1.  $\text{pp}$

B♭Cl. 2.  $\text{pp}$

B♭Cl. Alt.  $\text{pp}$

B♭Cl. Bar.  $\text{pp}$

Ed. Bar. Alt. 1.  $\text{pp}$

Ed. Bar. Alt. 2.  $\text{pp}$

Ed. Bar. Ten.  $\text{pp}$

Ed. Bar. Bar.  $\text{pp}$

Horn F.  $\text{pp}$

B♭Tpt. 1.  $\text{pp}$

B♭Tpt. 2.  $\text{pp}$

Tbn. 1.  $\text{pp}$

Tbn. 2.  $\text{pp}$

B♭Cor.  $\text{pp}$

B♭Bass. 1.  $\text{pp}$

B♭Bass. 2.  $\text{pp}$

Euph. C.  $\text{pp}$

Bass C.  $\text{pp}$

Ch. Contra.  $\text{pp}$

Timb.  $\text{pp}$

Perc.  $\text{pp}$

01.1536.10