

Lemon

Piano (Full Score)

♩ = 88 (♩ = ♪)

Clarinet in B \flat

Clarinet in B \flat
(Option for Duet)

Piano

mf

Gm F

4

C \sharp o

E \flat B \flat

7

F B \flat

10 (A)

mf

Gm7 F Eb Bb Eb

14

Gm7 F Eb Gm

18 (B)

(B) Cm7

(C) f

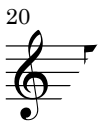
Cm6 Eb F7 Bb (C) Eb Bb f

Bb F D7 Eb Bb

Lemon

Clarinet in B \flat

$\text{♩} = 88$ ($\text{♪} = \text{♪}^{\frac{3}{4}}$)



Lemon

Clarinet in B \flat
(Option for Duet)

$\text{♩} = 88$ ($\text{♪} = \text{♪}^{\frac{3}{4}}$)

9 **(A)** *mf*

13

17 **(B)**

21 **(C)** *f*

25

29 **(D)** 4

36 2

41

46 **(F)** $\text{♪} = \text{♪}^{\frac{3}{4}}$ **(G)** *f*

rit.

Lemon

クラリネット ショートソロ
(伴奏なし)

♩=88 (♩=♩³)

