

# 紅蓮華

LiSA

## Piano (Full Score)

Tempo: ♩=132  
Dynamic: *mf*

Bass Trombone

Bass Trombone (Option for Duet)

Piano

5

*mf*

*if possible*

*mf*

Chord markings:  $A\flat 6$ ,  $B\flat(4)$ ,  $A\flat M7$

15

Cm7 B $\flat$ (4) A $\flat$ M7

20

B $\flat$  A $\flat$ M7

25

A $\flat$ M7 B $\flat$ (4) Cm7

30

B $\flat$  Cm7

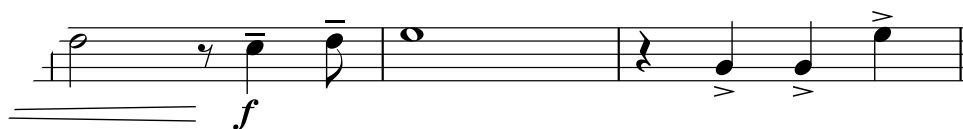
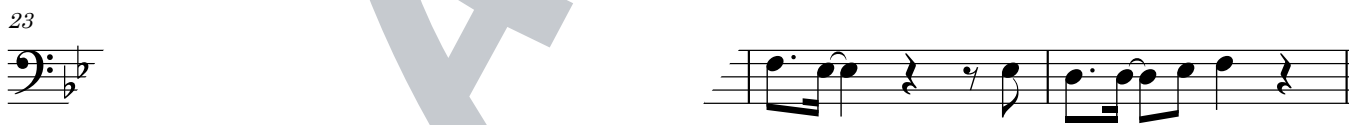
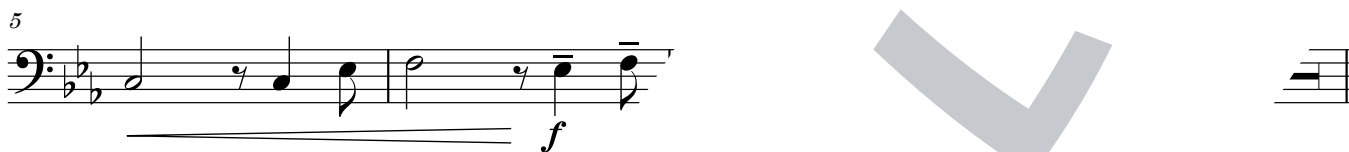
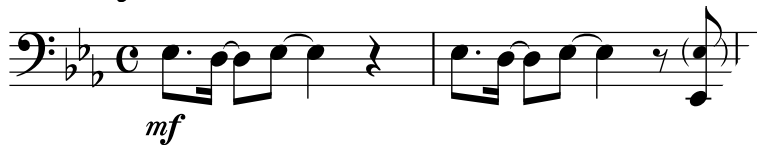
*f* *p*

# 紅蓮華

LiSA

## Bass Trombone

$\text{♩} = 132$

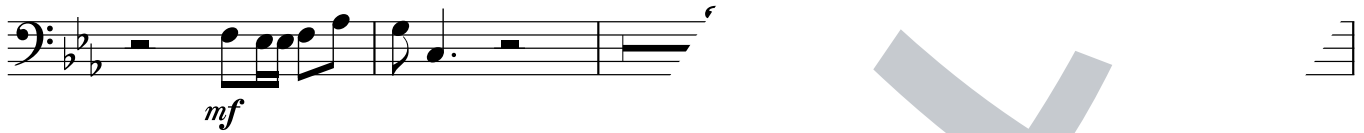


## 紅蓮華

LiSA

Bass Trombone  
(Option for Duet) $\text{♩} = 132$ 

12



18



23



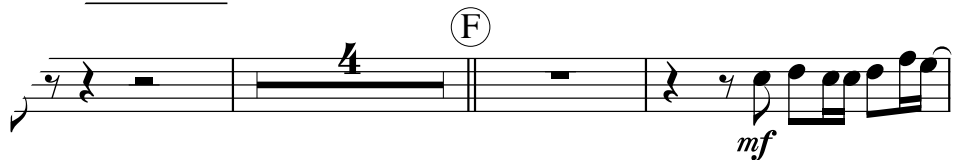
28



33

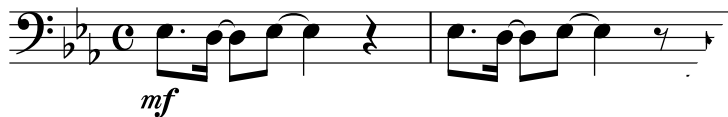


38



## 紅蓮華

LiSA

バストロンボーン ショートソロ  
(伴奏なし) $\text{♩} = 132$ 

5



10



14



19

