

炎 LiSA

Piano (Full Score)

♩ = 76

Trombone

Trombone
(Option for Duet)

Piano

p

mf

f

red.

A

Cm B^\flat A^\flat $\frac{\text{B}^\flat(4)}{\text{E}^\flat}$

$\frac{\text{B}^\flat}{\text{D}}$ Cm A^\flat

A^\flat B^\flat E^\flat $\frac{\text{B}^\flat}{\text{D}}$ Cm A^\flat

13

mf

mf

B^b $Cm7$ E^b/B^b A^b B^b7/A^b E^b/G

17

sc.

cresc.

Cm Cm/B^b B^bM7 Cm^{-5} D^b

cresc.

21

cresc.

B^bM7 $C7$ F A^m/E $Dm7$ B^bM7 C

炎 LiSA

Trombone

♩=76

4

mp (A)

8

12

16

20

cresc.

23

27

2

opt. (E)

mp

♯する場合、小音符側を演奏する



炎 LiSA

Trombone
(Option for Duet)

♩=76

15

19

cresc.

23

27

31

35

mp

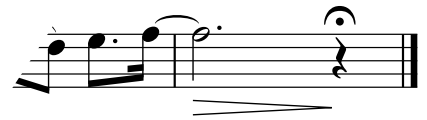
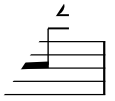
39

43

炎 LiSA

トロンボーン ショートソロ
(伴奏なし)

♩=76



SAMPLE