

双頭の鷲の旗のもとに ^{Jo}

Stately march tempo (♩=108~112)

Musical score for 'Double-headed Eagle Under the Flag' (Jo). The score is arranged for a large ensemble and is divided into five systems. The tempo is 'Stately march tempo' with a metronome marking of ♩=108~112. The key signature is one flat (Bb) and the time signature is 2/4. The score includes parts for various instruments, with dynamics such as *ff* and *f* indicated. A large 'SAMPLE' watermark is overlaid on the score. The score concludes with a 'choke' instruction.

System 1: Flute, Clarinet in B^b/Trumpet in B^b, Soprano Saxophone in B^b, Oboe/Violin.

System 2: Clarinet in B^b/Trumpet in B^b, Alto Saxophone in E^b, Oboe/Violin.

System 3: Clarinet in B^b, Alto Saxophone in E^b/Alto Horn in E^b, Horn in F, Violin, Viola.

System 4: Tenor Saxophone in B^b, Clarinet in B^b, Horn in F, Trombone/Euphonium/Bassoon/Cello.

System 5: Bass Clarinet in B^b, Baritone Sax, Trombone/^bP, Others, Vc.

Chord markings: B^b, E^m, B^bm, D^b, F.

Final instruction: *choke*

9

1 Fl.
Cl./Trp./
S.Sax.
Ob./Vn.

2 Cl./Trp.
A.Sax.
Ob./Vn.

3 Cl.
A.Sax./
A.Hrn.
Hrn.
Vn.
Va.

4 T.Sax.
Cl.
Hrn.
Trb./Euph./
Bsn./Vc.

5 B.Cl.
Bar.Sax.
Trb./Euph./
Bsn./Vc./
St.B.
Tb.

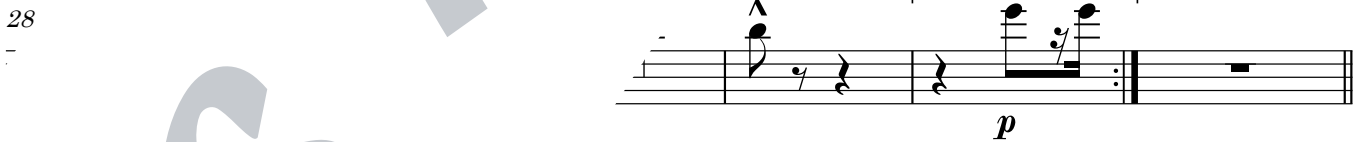
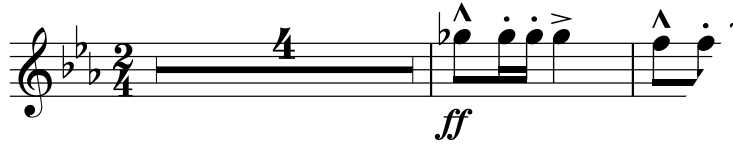
E_b B_b D Gm Cm⁷ F B_b
D E_b F₇ E_b Melody (guide)

ff

双頭の鷲の旗のもゝ

PART 1 Flute

Stately march tempo (♩=108~112)

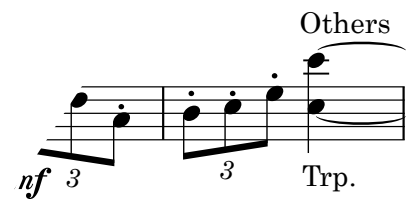
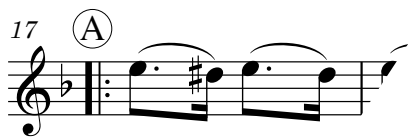
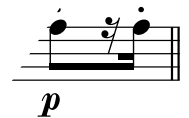
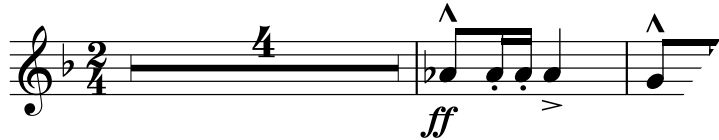


双頭の鷲の旗のもゝ

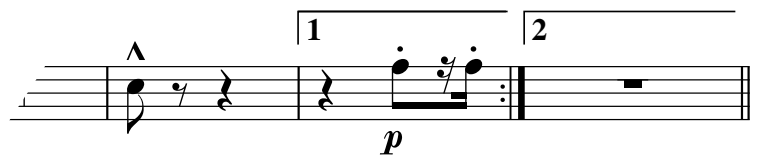
PART 1

Clarinet in B \flat / Trumpet in B \flat /
Soprano Saxophone in B \flat

Stately march tempo ($\text{♩} = 108 \sim 112$)



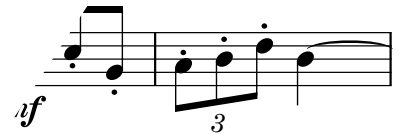
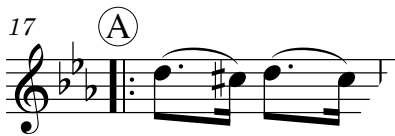
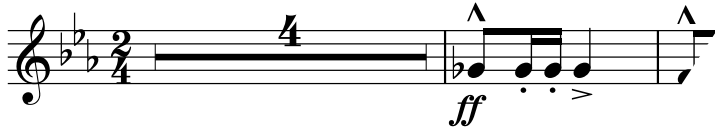
28



双頭の鷲の旗のもゝ

PART 1 Oboe

Stately march tempo (♩=108~112)



28

