

海に見える街

Piano (Full Score)

Clarinet in B \flat

Clarinet in B \flat
(Option for Duet)

Piano

$\text{♩} = 104$

$\text{♩} = 104$

Cm7 $\text{B}\flat/\text{D}$ $\text{E}\flat$

f

6 (A)

(A) Gm Dm/F

mf

D7 Gm $\text{D7}/\text{A}$

(B)

mf

Gm (B) Gm Dm/F $\text{E}\flat$ $\text{B}\flat/\text{D}$

16

Cm7 F B \flat D7 Gm $\frac{D7}{A}$

21

Gm Cm7

26

Cm Cm7 $\frac{Cm7}{F}$

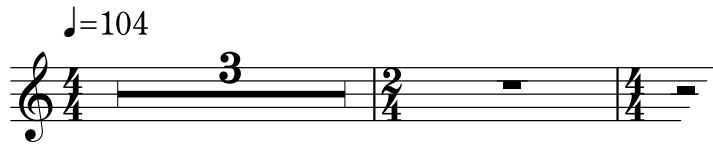
if possible

E \flat $\frac{B\flat}{D}$ Cm7 F B \flat D7

海に見える街

Clarinet in B \flat

$\text{♩} = 104$



7




11



21



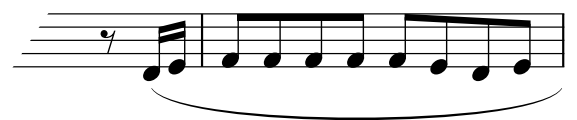
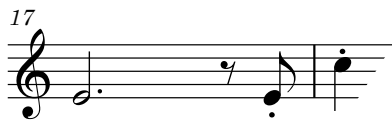
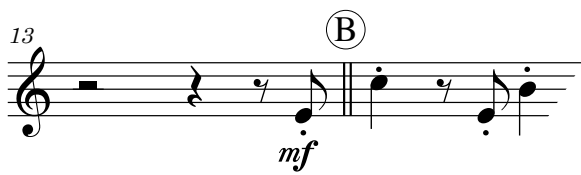
25



mf

海に見える街

Clarinet in B \flat
(Option for Duet)



25



海に見える街

クラリネット ショートソロ
(伴奏なし)

♩=104

mf

Musical notation for measures 1-4 in treble clef, key of D major, 4/4 time. The first measure starts with a quarter rest followed by a dotted quarter note. The dynamic is marked *mf*.

5

Musical notation for measures 5-8 in treble clef, key of D major, 4/4 time.

f

Musical notation for the continuation of measure 8, marked *f*.

9 (A)

Musical notation for measures 9-12 in treble clef, key of D major, 4/4 time. Measure 9 is marked with a circled 'A'.

Musical notation for the continuation of measure 12.

13

Musical notation for measures 13-16 in treble clef, key of D major, 4/4 time.

Musical notation for measures 16-17 in treble clef, key of D major, 4/4 time.

17

Musical notation for measures 17-18 in treble clef, key of D major, 2/4 time.

Musical notation for measures 18-21 in treble clef, key of D major, 2/4 time.

Musical notation for measures 21-24 in treble clef, key of D major, 2/4 time.