

# ルパン三世のテーマ

## Piano (Full Score)

Flute

Flute  
(Option for Duet)

Piano

$\text{♩} = 132$

$\text{♩} = 132$   
Gm B $\flat$ 7 Am7 A $\flat$ 7<sup>-5</sup>

*f*

4

D7<sup>(4)</sup>

*mf*

The image displays a musical score for the piece 'Lupin the Third Theme'. It is arranged for Flute and Piano. The score is in G minor, 4/4 time, with a tempo of 132 beats per minute. The piano part begins with a forte (*f*) dynamic. The score includes a section for two flutes, with the second flute part being an optional duet. A large 'SAMPLE' watermark is overlaid on the page. The score is divided into several systems, with a repeat sign and first/second endings in the second system. The piano part features complex rhythmic patterns and chordal accompaniment, including a section with a *mf* dynamic.

14

C7 Eb F G

19 (B)

(B) Gm7

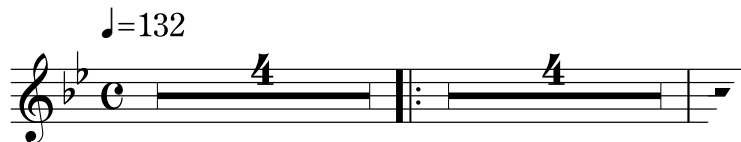
23

C7 C Gm Cm7 F7

BbM7 Am7 D7 Gm Gm7/F

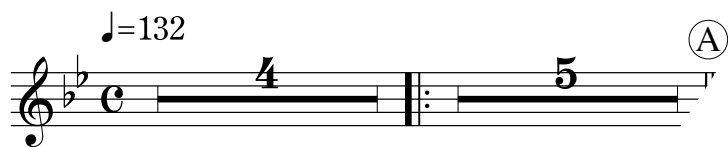
# ルパン三世のテーマ

Flute

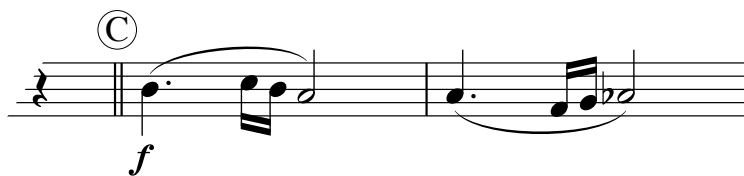


# ルパン三世のテーマ

Flute (Option for Duet)



27



# ルパン三世のテーマ

フルート ショートソロ  
(伴奏なし)

