

TUNED IN

B \flat Clarinet

A Comprehensive Approach to Band Intonation

BRIAN BALMAGES AND ROBERT HERRINGS

Table of Contents

Concert B \flat Major / G Minor	2	Concert B Major / G \sharp Minor	18
Concert E \flat Major / C Minor	4	Concert G \flat Major / E \flat Minor	20
Concert F Major / D Minor	6	Concert D \flat Major / B \flat Minor	22
Concert C Major / A Minor	8	Concert A \flat Major / F Minor	24
Concert G Major / E Minor	10	Major and Minor Scales	26
Concert D Major / B Minor	12	12 Chorales for Band	28
Concert A Major / F \sharp Minor	14	Whole Instrument Tuning Chorales	32
Concert E Major / C \sharp Minor	16		

About This Book:

Good intonation is one of the most important foundations of music. This book includes a downloadable set of drones in every key. You can also use your own electronic drone generated from a capable tuner or mobile app. Playing with drones helps musicians better understand pitch tendencies and further develops the ear. It is also important to play without drones, but always check your pitch with a tuner. Be sure to use both approaches as part of a regular practice routine. As with anything, the more you practice, the better your intonation will be!



A speaker icon is included on lines that have a downloadable drone option, or musicians can use their own device to create a drone.

To access the free downloadable drones, visit www.fjhmusic.com/downloads and enter the following authentication code.

Website: www.fjhmusic.com/downloads

Authentication Code:

CONCERT B \flat MAJOR / G MINOR



1. Chromatic Intervals

Play in any combination. A suggested progression is:

- Line A alone with recorded drone. • Line B alone with recorded drone.
- Line A and B combined with drone. • A, B and C combined (with and without recorded drone).

Two systems of musical notation for Chromatic Intervals, each with three staves labeled A, B, and C. The music is in 4/4 time. Staff A and B contain melodic lines with chromatic intervals, while Staff C contains a drone accompaniment consisting of sustained chords.



2. Interval Tuning

Play with recorded drone, then without.

Two staves labeled A and B for Interval Tuning. Staff A contains a melodic line with chromatic intervals, and Staff B contains a drone accompaniment. The music is in 4/4 time.



3. Isolating Concert B \flat

Play with recorded drone, then without.

Two staves labeled A and B for Isolating Concert B \flat . The music is in 4/4 time. Above the staves, the following instrument groupings are listed: Tba / Bar, Tbn, Cl, Sax / Bsn, Tpt / Hn, Fl / Ob. Staff A contains a melodic line with chromatic intervals, and Staff B contains a drone accompaniment.



4. Chorale

Play using the following combinations:

- With recorded drone.
- Without recorded drone, having various band members droning on concert B \flat and F.
- Chorale alone (without any drone).

4. Chorale



5. Concert G Minor Drone

Play with recorded drone, then without.

5. Concert G Minor Drone

6. Descending Triads

6. Descending Triads

(B \flat Concert) (A Concert)

C Cm C $^\circ$ B Bm B $^\circ$

(A \flat Concert) (G Concert)

B \flat B \flat m B \flat $^\circ$ A Am

MAJOR AND MINOR SCALES

Play all scales with and without recorded drone. Suggested drone pitches are included for each scale.

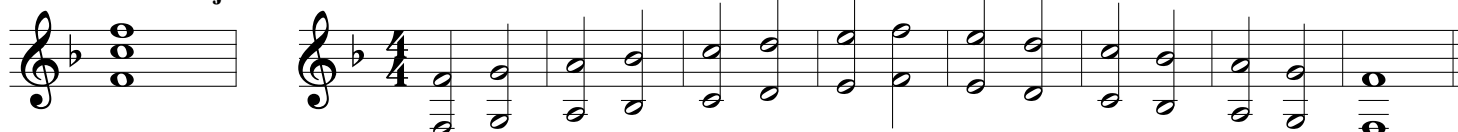
Concert B \flat Major



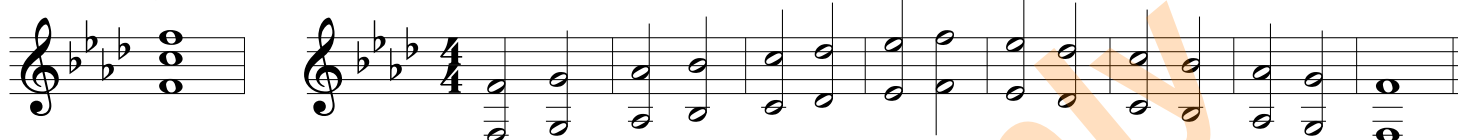
Concert B \flat Minor



Concert E \flat Major



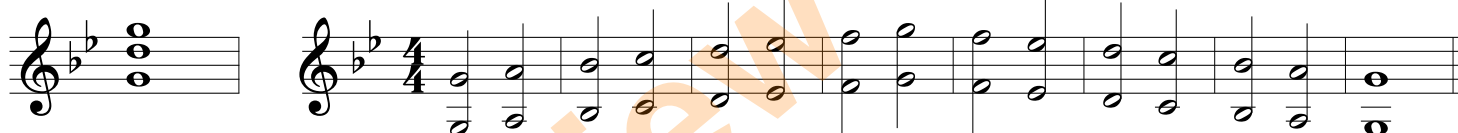
Concert E \flat Minor



Concert F Major



Concert F Minor



Concert C Major



Concert C Minor



Concert G Major



Concert G Minor



Concert D Major



Concert D Minor



12 CHORALES FOR BAND

BRIAN BALMAGES

Chorale No. 1 in B \flat Major

Two staves, A and B, in 4/4 time. Staff A begins with a half note G \flat (B \flat 4), followed by quarter notes A \flat 4, B \flat 4, C5, D5, E5, and a half note F5. Staff B begins with a half note G \flat (B \flat 3), followed by quarter notes A \flat 3, B \flat 3, C4, D4, E4, and a half note F4. Both staves have a slur over the first four measures and a fermata over the final half note in measure 4.

Chorale No. 2 in B \flat Major

Two staves, A and B, in 4/4 time. Staff A begins with a half note G \flat (B \flat 4), followed by quarter notes A \flat 4, B \flat 4, C5, D5, E5, and a half note F5. Staff B begins with a half note G \flat (B \flat 3), followed by quarter notes A \flat 3, B \flat 3, C4, D4, E4, and a half note F4. Both staves have a slur over the first four measures and a fermata over the final half note in measure 4.

Chorale No. 3 in G Minor

Two staves, A and B, in 4/4 time. Staff A begins with a half note G4, followed by quarter notes A4, B4, C5, D5, E5, and a half note F5. Staff B begins with a half note G3, followed by quarter notes A3, B3, C4, D4, E4, and a half note F4. Both staves have a slur over the first four measures and a fermata over the final half note in measure 4.

WHOLE INSTRUMENT TUNING CHORALES

*Multiple tuning notes are suggested under brackets for each instrument.
Tune each note to get an accurate snapshot of intonation.*

Woodwind / Bass Tuning Notes and Chords

Cl. / B. Cl. A. Sax. + B. Sax. + T. Sax. Ob / S.B.

Fl.

Full Band Comprehensive Tuning Chorale

Tuba / Bar. Tbn. Tpt. / Hn. Cl. / B. Cl. Bsn. / T. Sax

A. Sax / B. Sax Fl. / Ob. Fl. / Ob. A. Sax / B. Sax / Bass Bsn. / Hn. / T. Sax

Cl. / B. Cl. Tpt. Tbn. Tuba / Bar.