

# 銀河鉄道 999

## Piano (Full Score)

Baritone Saxophone in E $\flat$

Baritone Saxophone in E $\flat$   
(Option for Duet)

Piano

$\text{♩} = 144$

$A^{\flat}$   $A^{\flat}M7$   $B^{\flat}$

$f$

5

C  $B^{\flat}$

A7

9

$\cdot 7$   $B^{\flat}$   $\frac{E}{A}$   $Gm7$   $\frac{E}{A}$   $B^{\flat}$   $Bm7^{-5}$

14

$C7^{(4)}$   $B^b/C$   $B$   $F$   $A7$

*mp*

18

$Dm$   $F7/E^b$   $F7$   $C7$   $F$   $E^b7$

*mf*

23

$Fm7^{-5}$   $B^b7$   $Cm$   $Cm7/B^b$

*f*

# 銀河鉄道 999

Baritone Saxophone in E $\flat$

$\text{♩} = 144$

5

**A**

*mf*

9

14

**B**

19

23

**C**

28

33

**D**

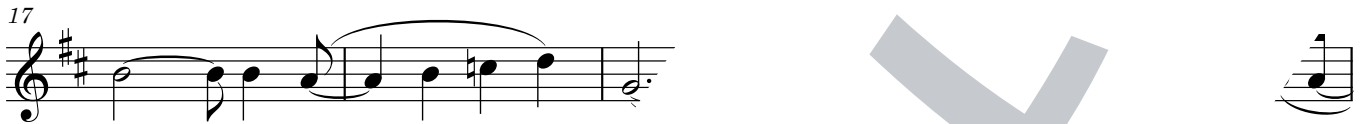
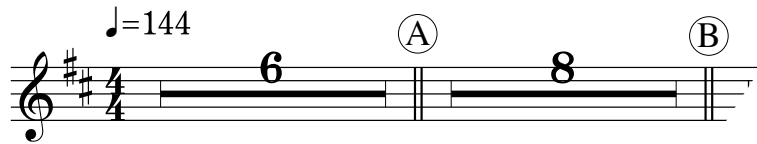
*f*

*tr*

*mf*

# 銀河鉄道 999

Baritone Saxophone in E $\flat$   
(Option for Duet)



# 銀河鉄道 999

バリトンサクソ ショートソロ  
(伴奏なし)

♩=144

*mf*

4

8 (A)

12

16

19