

さよーならまたいつか

♩=120

Flute
Clarinet in B^b/
Trumpet in B^b/
Soprano Saxophone
in B^b
Oboe/Violin

1

Clarinet in B^b/
Trumpet in B^b
Alto Saxophone
in E^b
Oboe/Violin

2

Clarinet in B^b
Alto Saxophone in E^b/
Alto Horn in E^b
Horn in F
Violin
Viola

3

Tenor Saxophone
in B^b
Clarinet in B^b
Horn in F
Trombone/Euphonium/
Bassoon/Cello

4

Bass Clarinet i
Baritone S[?]
Trombone

5

A7 Dm9 Melody (Guide) B^b F

H.H.^o S.D.
B.D. *mf*
Tamb.
S.Cym. *mf*
p *mf*

6

1 Fl. Cl./Trp./ S.Sax. Ob./Vn.

2 Cl./Trp. A.Sax. Ob./Vn.

3 Cl. A.Sax./ A.Hrn. Hrn. Vn. Va.

4 T.Sax. Cl. Hrn. Trb./Euph./ Bsn./Vc.

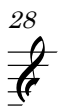
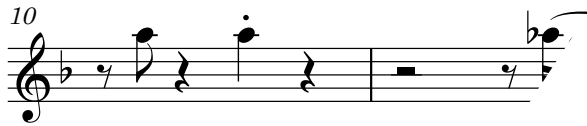
5 B.Cl. Bar.Sax. Trb./Euph./ Bsn./Vc./ St.

Cm7 Bm⁻⁵ Bm7 Am7

Cabasa *mf*

NHK 連続テレビ小説『虎に翼』主題歌
さよーならまたいつ

PART 1
Flute



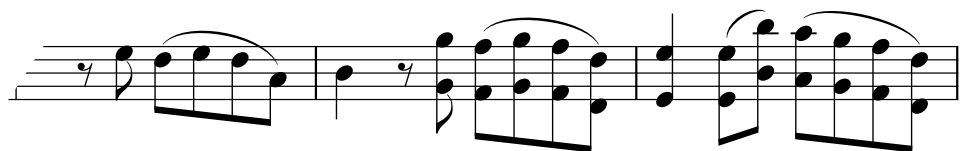
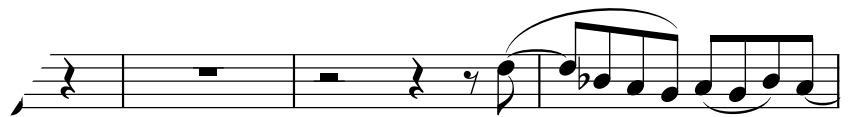
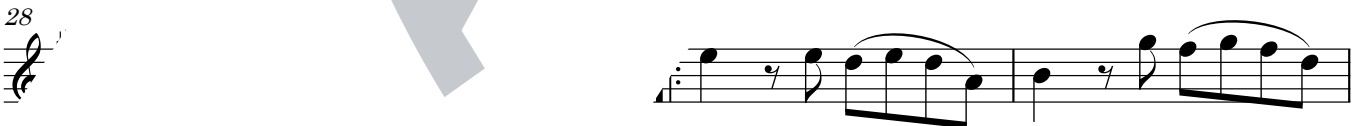
NHK 連続テレビ小説『虎に翼』主題歌

さよーならまたいつ

PART 1

Clarinet in B \flat / Trumpet in B \flat /
Soprano Saxophone in B \flat

$\text{♩} = 120$



NHK 連続テレビ小説『虎に翼』主題歌
さよーならまたいつ

PART 1
Oboe

♩=120

