

# First Flight

3

## Snare Drum

Grade 1, Duration 2:00

MURRAY HOULLIF  
(b. 1948)

Moderato ♩ = 80

Solo



Preview Only

## Easy Does It!

## Snare Drum

Grade 1, Duration 2:05

MURRAY HOULLIF  
(b. 1948)

Allegretto ♩ = 92

Solo

6

11

16

20

24

29

34

37

*mf*

*f*

*p-f*

*f*

**km** KENDOR  
MUSIC PUBLISHING

Preview Only

# Dynamic

5

## Snare Drum

Grade 1, Duration 1:25

MURRAY HOULLIF  
(b. 1948)

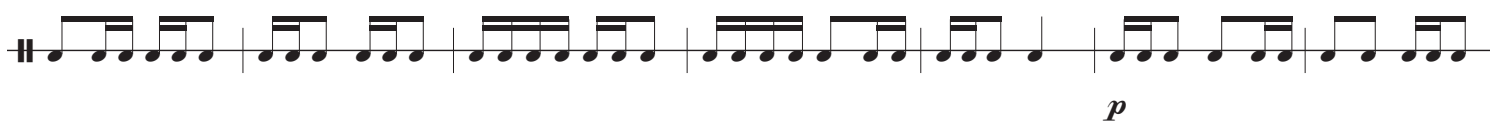
Allegretto ♩ = 104

Play 4x

Solo



8



15



22



29



36



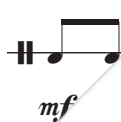
43



49



55



Preview Only

# Stick-Click Waltz

## Snare Drum

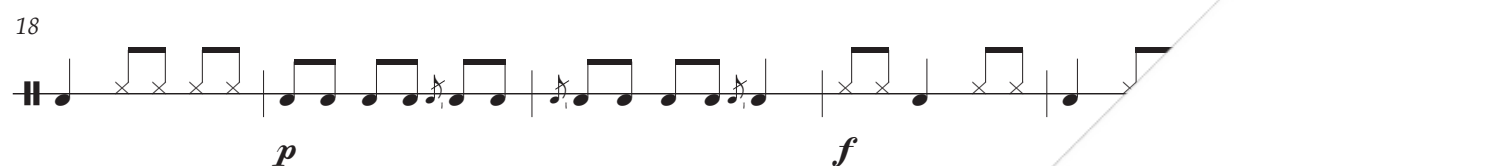
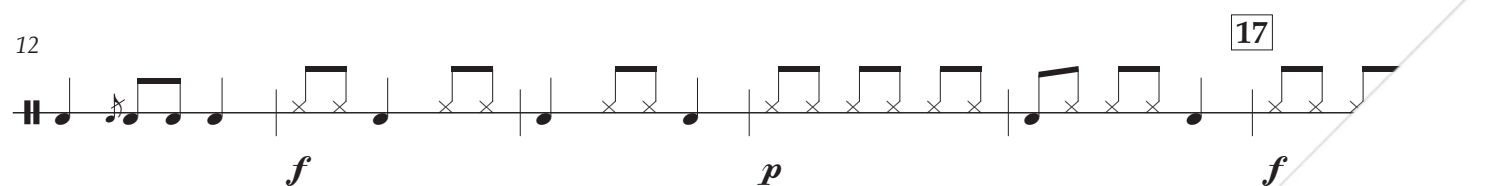
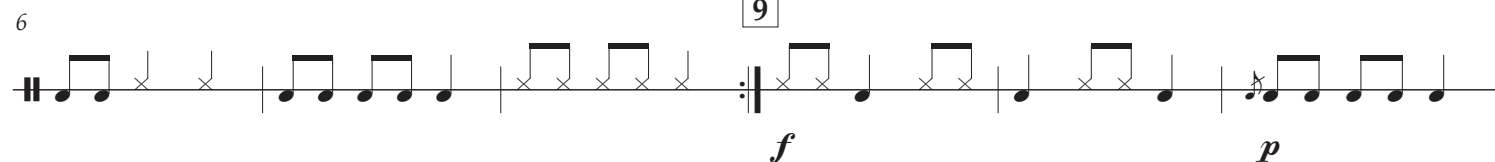
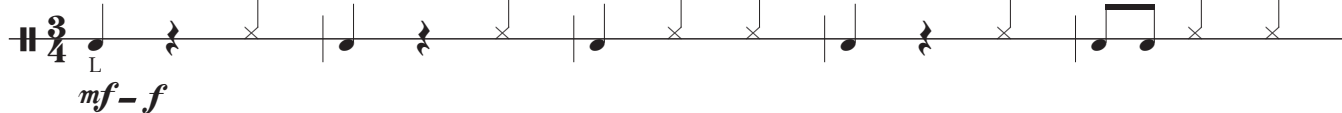
Grade 1, Duration 1:50

MURRAY HOULLIF  
(b. 1948)

Moderato ♩ = 92-96

R on L stick (in the air)

Solo



Preview Only

# Flam-boyance

7

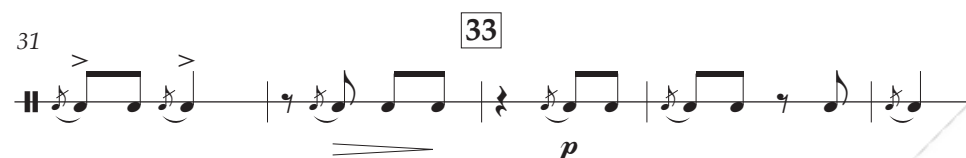
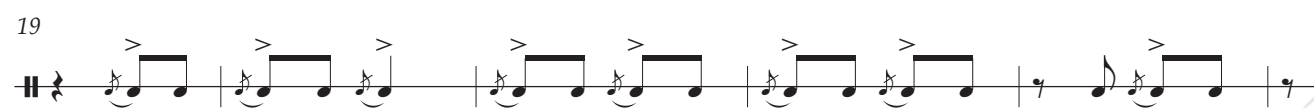
## Snare Drum

Grade 1, Duration 1:42

MURRAY HOULLIF

(b. 1948)

Moderato ♩ = 92



Preview Only

# Solid Rock

## Snare Drum

Grade 1+, Duration 1:43

MURRAY HOULLIF

(b. 1948)

**Allegretto** ♩ = 112-116

Play 4Xs  
RH on rim

Solo

4/4

LH on head

**f**

1st

R L R L R

5

2nd

3rd

9

4th

11

**mp**

R L

13

17

19

**mf**

21

25

27

# Ruffing It

9

## Snare Drum

Grade 2, Duration 1:40

MURRAY HOULLIF

(b. 1948)

March ♩ = 88



Preview Only

# Kilts

**Snare Drum**

Grade 2, Duration 2:10

Open stroke rolls (5, 9, 13)

**MURRAY HOULLIF**

(b. 1948)

**Slow March** ♩ = 132

**Solo**

*f - p*

4

9

13

17

18

*f p f*

22

27

32

35

36

**KENDOR**  
MUSIC PUBLISHING

**Preview Only**



# Mole Poblano

11

## Snare Drum

Grade 2, Duration 1:40

MURRAY HOULLIF

(b. 1948)

Latin ♩ = 96-100

Snares off. CLAVE - lay stick across rim and head

## Solo

The first staff of music is in 4/4 time, marked *mf*. It begins with a treble clef and a key signature of one flat (B-flat). The melody consists of eighth and quarter notes. The lyrics 'The Rose Tree' are written below the staff, with 'The' under the first measure, 'Rose' under the second, 'Tree' under the third, and 'The Rose Tree' under the fourth. The notes are: G4 (quarter), A4 (quarter), B4 (quarter), A4 (quarter), G4 (quarter), F4 (quarter), E4 (quarter), D4 (quarter), C4 (half). The lyrics are: 'The' (under G4), 'Rose' (under A4), 'Tree' (under B4), 'The' (under A4), 'Rose' (under G4), 'Tree' (under F4), 'The' (under E4), 'Rose' (under D4), 'Tree' (under C4).

5

5

The fifth staff contains a musical phrase starting with a double bar line. It begins with a half note, followed by a quarter note, and then a series of eighth and sixteenth notes. There are several articulation marks (vertical lines with 'x' marks) throughout the phrase. The dynamics *cresc.* and *f* are indicated below the staff. The phrase ends with a double bar line and the word **Fine**.

9

The first staff of music begins with a double bar line and a forte (*f*) dynamic marking. It contains a sequence of eighth and sixteenth notes, some beamed together, with accents (>) and a piano (*p*) marking. The notation includes triplets and various rests.

13

13

Musical notation for exercise 13, consisting of two measures. The first measure contains six groups of eighth notes: three triplets (indicated by a '3' above a bracket) and three single eighth notes. The second measure contains two groups of eighth notes: two triplets (indicated by a '3' above a bracket) and two single eighth notes. The notation includes a double bar line at the start and end of the exercise.

17

[illegible]

21


21

Exercise 21: A single staff with a key signature of one sharp (F#). The exercise consists of five measures. Measures 1 and 3 contain a half note G4 with an accent (>) and a fermata. Measures 2, 4, and 5 contain a half note A4 with an accent (>) and a fermata. There are rests in measures 1, 2, 3, 4, and 5. The exercise ends with a double bar line.

25

29

29



# Preview Only

## Jazz Bolero

## Snare Drum

Grade 2, Duration 1:50

MURRAY HOULLIF

(b. 1948)

Moderato ♩ = 104-108

Solo

*p*

6

9

*mp*

11

16

17

PRESS ROLL - buzz both sticks at same time

*mf*

21

*cresc.*

26

31

33

*mf*

37

43



Preview Only

# Hillbilly Holiday

13

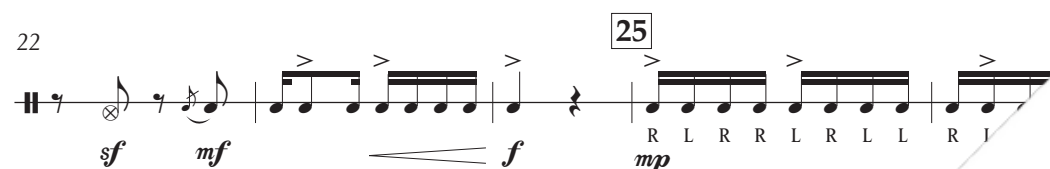
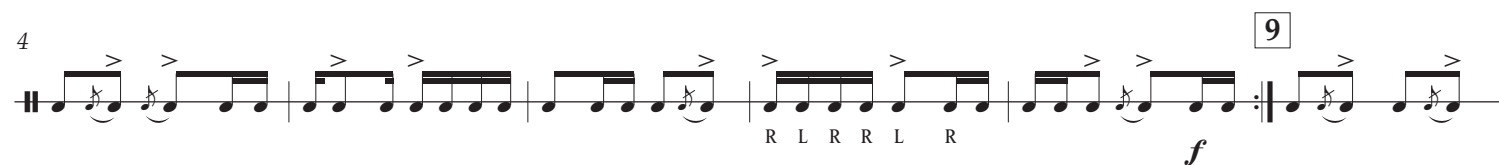
## Snare Drum

Grade 2, Duration 1:15

MURRAY HOULLIF

(b. 1948)

Allegro ♩ = 100-104



Preview Only

# Roll Call

## Snare Drum

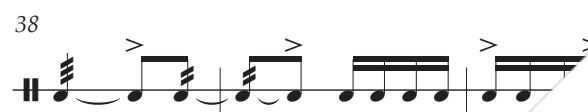
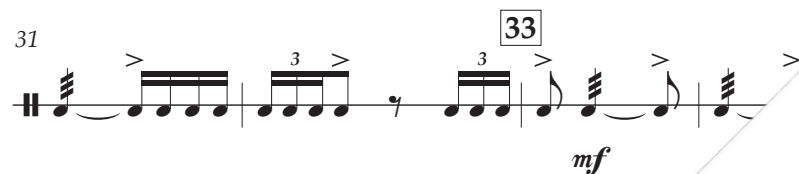
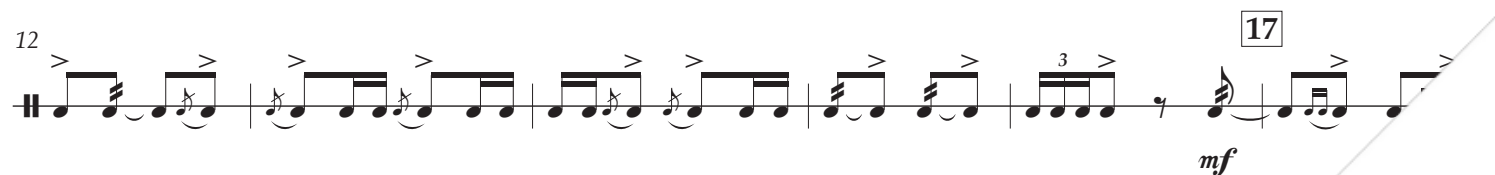
Grade 2 - 2+, Duration 1:30

MURRAY HOULLIF

(b. 1948)

March ♩ = 88-92

Solo



Preview Only